

Anti-Beclin-1 Antibody (8U829)

Product Details

Ig Type:	IgG
Reactivity:	Human,Mouse,Rat
Molecular Weight:	Theoretical: 50 kDa.
Clone:	8U829
Purification:	Protein G purified

Applications

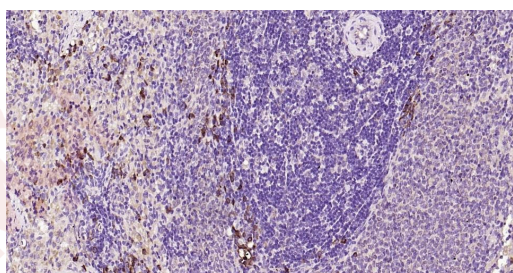
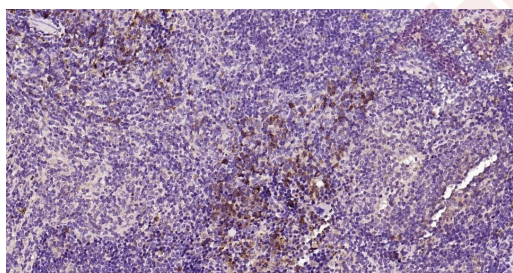
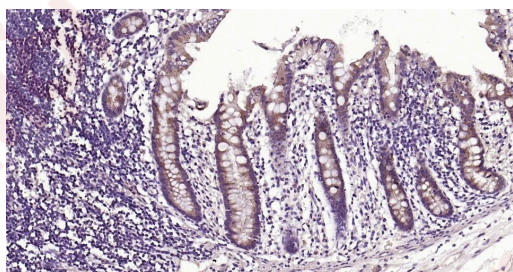
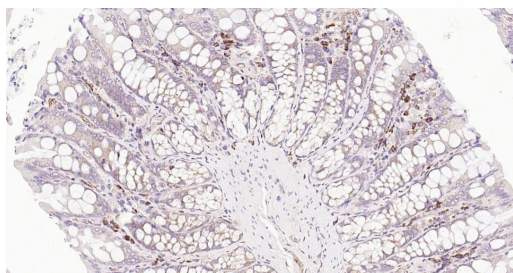
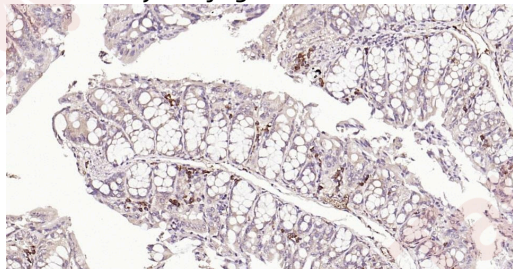
Verified Activity:

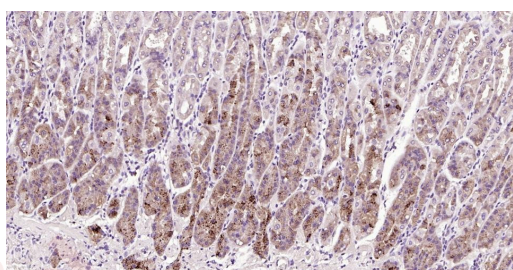
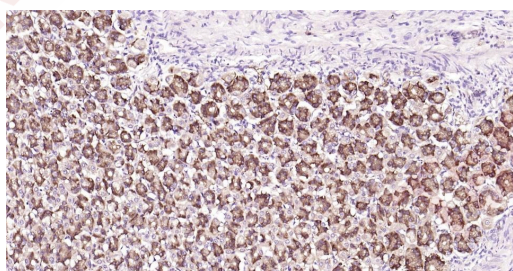
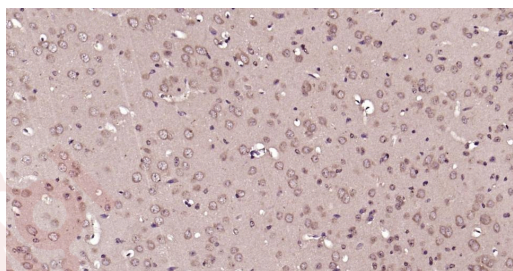
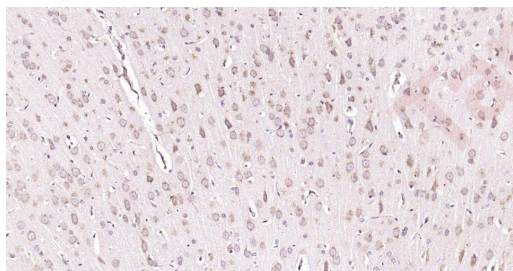
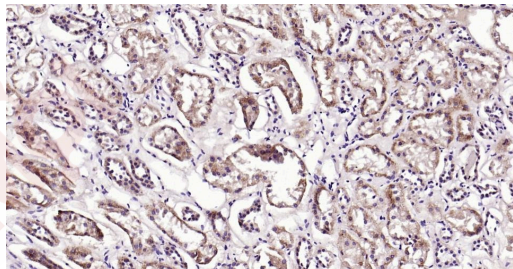
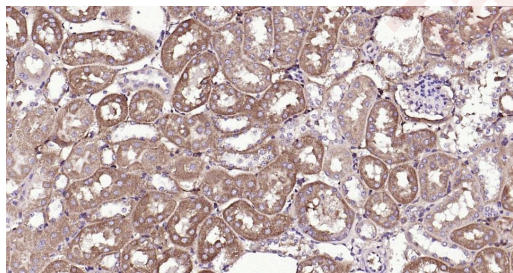
1. Paraformaldehyde-fixed, paraffin embedded Mouse Colon; Antigen retrieval by boiling in sodium citrate buffer (pH6.0) for 15 min; Antibody incubation with Beclin 1 Monoclonal Antibody, Unconjugated (ascites of TMAB-00208) at 1:200 overnight at 4°C, followed by conjugation to the secondary antibody and DAB staining.
2. Paraformaldehyde-fixed, paraffin embedded Rat Colon; Antigen retrieval by boiling in sodium citrate buffer (pH6.0) for 15 min; Antibody incubation with Beclin 1 Monoclonal Antibody, Unconjugated (ascites of TMAB-00208) at 1:200 overnight at 4°C, followed by conjugation to the secondary antibody and DAB staining.
3. Paraformaldehyde-fixed, paraffin embedded Human Colon; Antigen retrieval by boiling in sodium citrate buffer (pH6.0) for 15 min; Antibody incubation with Beclin 1 Monoclonal Antibody, Unconjugated (ascites of TMAB-00208) at 1:200 overnight at 4°C, followed by conjugation to the secondary antibody and DAB staining.
4. Paraformaldehyde-fixed, paraffin embedded Mouse Spleen; Antigen retrieval by boiling in sodium citrate buffer (pH6.0) for 15 min; Antibody incubation with Beclin 1 Monoclonal Antibody, Unconjugated (ascites of TMAB-00208) at 1:200 overnight at 4°C, followed by conjugation to the secondary antibody and DAB staining.
5. Paraformaldehyde-fixed, paraffin embedded Rat Spleen; Antigen retrieval by boiling in sodium citrate buffer (pH6.0) for 15 min; Antibody incubation with Beclin 1 Monoclonal Antibody, Unconjugated (ascites of TMAB-00208) at 1:200 overnight at 4°C, followed by conjugation to the secondary antibody and DAB staining.
6. Paraformaldehyde-fixed, paraffin embedded Mouse Kidney; Antigen retrieval by boiling in sodium citrate buffer (pH6.0) for 15 min; Antibody incubation with Beclin 1 Monoclonal Antibody, Unconjugated (ascites of TMAB-00208) at 1:200 overnight at 4°C, followed by conjugation to the secondary antibody and DAB staining.
7. Paraformaldehyde-fixed, paraffin embedded Human Kidney; Antigen retrieval by boiling in sodium citrate buffer (pH6.0) for 15 min; Antibody incubation with Beclin 1 Monoclonal Antibody, Unconjugated (ascites of TMAB-00208) at 1:200 overnight at 4°C, followed by conjugation to the secondary antibody and DAB staining.
8. Paraformaldehyde-fixed, paraffin embedded Rat Cerebrum; Antigen retrieval by boiling in sodium citrate buffer (pH6.0) for 15 min; Antibody incubation with Beclin 1 Monoclonal Antibody, Unconjugated (ascites of TMAB-00208) at 1:200 overnight at 4°C, followed by conjugation to the secondary antibody and DAB staining.
9. Paraformaldehyde-fixed, paraffin embedded Mouse Cerebrum; Antigen retrieval by boiling in sodium citrate buffer (pH6.0) for 15 min; Antibody incubation with Beclin 1 Monoclonal Antibody, Unconjugated (ascites of TMAB-00208) at 1:200 overnight at 4°C, followed by conjugation to the secondary antibody and DAB staining.

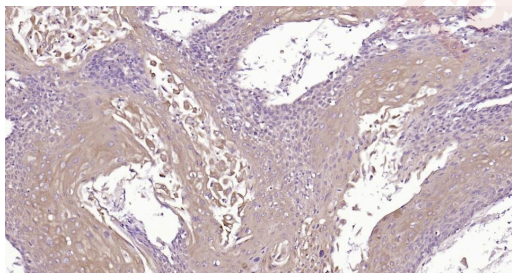
10. Paraformaldehyde-fixed, paraffin embedded Rat Stomach; Antigen retrieval by boiling in sodium citrate buffer (pH6.0) for 15 min; Antibody incubation with Beclin 1 Monoclonal Antibody, Unconjugated (ascites of TMAB-00208) at 1:200 overnight at 4°C, followed by conjugation to the secondary antibody and DAB staining.

11. Paraformaldehyde-fixed, paraffin embedded Human Fundus; Antigen retrieval by boiling in sodium citrate buffer (pH6.0) for 15 min; Antibody incubation with Beclin 1 Monoclonal Antibody, Unconjugated (ascites of TMAB-00208) at 1:200 overnight at 4°C, followed by conjugation to the secondary antibody and DAB staining.

12. Paraformaldehyde-fixed, paraffin embedded Human Cervical Cancer; Antigen retrieval by boiling in sodium citrate buffer (pH6.0) for 15 min; Antibody incubation with Beclin 1 Monoclonal Antibody, Unconjugated (ascites of TMAB-00208) at 1:200 overnight at 4°C, followed by conjugation to the secondary antibody and DAB staining.







Application: IF,IHC-Fr,IHC-P

Recommended IHC-P: 1:100-500; IHC-Fr: 1:100-500; IF: 1:100-500

Properties

Stability & Storage: Store at -20°C or -80°C for 12 months. Avoid repeated freeze-thaw cycles.

Shipping: Shipping with blue ice.

Antigen Details

Immunogen: KLH conjugated synthetic peptide: human Beclin 1

Antigen Species: Human

Gene ID: 8678

Uniprot ID: Q14457

Synonyms: Protein GT197;Coiled-coil myosin-like BCL2-interacting protein;BECN1;GT197;Beclin-1

Biology Area: Signal Transduction,Tumor suppressors,Autophagy,Tumor Suppressors,Autophagy and mitophagy,Host Immune Response

Research Background

Beclin 1 is the first identified mammalian gene to mediate autophagy and also has tumor suppressor and antiviral function. Autophagy, a process of bulk protein degradation through an autophagosomic lysosomal pathway, is important for differentiation, survival during nutrient deprivation, and normal growth control, and is often defective in tumor cells. Beclin 1 was originally isolated in a yeast two hybrid screen to identify Bcl 2 binding partners and maps to a tumor susceptibility locus on human chromosome 17q21 that is frequently monoallelically deleted in human breast, ovarian and prostate cancer. Beclin 1 encodes an evolutionarily conserved 52kDa coiled coil protein that is expressed in human muscle, epithelial cells and neurons.

Inhibitor · Natural Compounds · Compound Libraries · Recombinant Proteins

This product is for Research Use Only· Not for Human or Veterinary or Therapeutic Use

Tel:781-999-4286 E_mail:info@targetmol.com Address:34 Washington Street,Wellesley Hills,MA 02481
