

## Anti-BDKRB2 Polyclonal Antibody

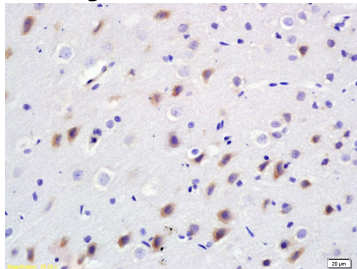
## Product Details

Ig Type:	IgG
Reactivity:	Rat (predicted:Human,Mouse)
Molecular Weight:	Theoretical: 43 kDa.
Purification:	Protein A purified

## Applications

## Verified Activity:

Tissue/cell: rat brain tissue; 4% Paraformaldehyde-fixed and paraffin-embedded;  
Antigen retrieval: citrate buffer (0.01M, pH6.0), Boiling bathing for 15 min; Block endogenous peroxidase by 3% Hydrogen peroxide for 30 min; Blocking buffer (normal goat serum) at 37°C for 20 min;  
Incubation: Anti-Bdkrb2/B2R Polyclonal Antibody, Unconjugated (TMAB-00205) 1:200, overnight at 4°C, followed by conjugation to the secondary antibody and DAb staining.



Application:	IF,IHC-Fr,IHC-P
Recommended	IHC-P: 1:100-500; IHC-Fr: 1:100-500; IF: 1:100-500

## Properties

Stability & Storage:	Store at -20°C or -80°C for 12 months. Avoid repeated freeze-thaw cycles.
Shipping:	Shipping with blue ice.

## Antigen Details

Immunogen:	KLH conjugated synthetic peptide: human Bdkrb2
Antigen Species:	Human
Gene ID:	624
Uniprot ID:	P30411
Synonyms:	B2;BRB2;BDKRB 2;BK 2;Kinin B2 Bradykinin receptor beta 2;Bradykinin receptor b2;BK2R;BKR 2; B2BRA;BK R2;BK2;B2R;B2BKR;BKR2;B2 bradykinin receptor;Bradykinin receptor beta 2;BRB 2; BK 2 receptor;BR B2;BK2 receptor;DKFZp686O088;BDKR B2
Biology Area:	Acute Phase Reactants,Vasodilation

## Research Background

Bradykinin increases vascular permeability, dilates blood vessels, contracts non-vascular smooth muscle, and causes pain. This product detects a receptor for bradykinin. The receptor is associated with G proteins that activate a

## A DRUG SCREENING EXPERT

---

phosphatidylinositol-calcium second messenger system.

Bradykinin B2 receptor expression has been reported in blood, brain, eye, kidney, liver, lung, prostate, skin, small intestine, synovium, uterus, and vessel. ESTs have been isolated from colon, connective tissue, heart, heart/melanocyte/uterus, kidney, lung, placenta, and thyroid libraries.

**Inhibitor · Natural Compounds · Compound Libraries · Recombinant Proteins**

This product is for Research Use Only · Not for Human or Veterinary or Therapeutic Use

Tel: 781-999-4286    E\_mail: info@targetmol.com    Address: 34 Washington Street, Wellesley Hills, MA 02481