

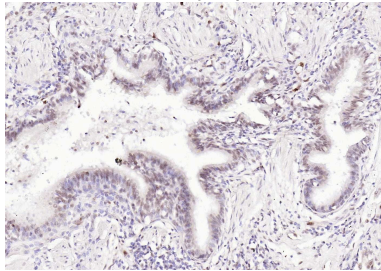
Anti-BCL6 Polyclonal Antibody

Product Details

Ig Type:	IgG
Reactivity:	Human,Mouse
Molecular Weight:	Theoretical: 78 kDa. Actual: 98 kDa.
Purification:	Protein A purified

Applications

Verified Activity: Paraformaldehyde-fixed, paraffin embedded (human lung carcinoma); Antigen retrieval by boiling in sodium citrate buffer (pH6.0) for 15 min; Block endogenous peroxidase by 3% hydrogen peroxide for 20 min; Blocking buffer (normal goat serum) at 37°C for 30 min; Incubation with (Bcl-6) Polyclonal Antibody, Unconjugated (TMAB-00201) at 1:25 overnight at 4°C, followed by operating according to SP Kit (Rabbit) instructions and DAB staining.



Application:	ELISA,IF,IHC-Fr,IHC-P
Recommended	IHC-P: 1:100-500; IHC-Fr: 1:100-500; IF: 1:100-500; ELISA: 1:5000-10000

Properties

Stability & Storage:	Store at -20°C or -80°C for 12 months. Avoid repeated freeze-thaw cycles.
Shipping:	Shipping with blue ice.

Antigen Details

Immunogen:	KLH conjugated synthetic peptide: human Bcl-6
Antigen Species:	Human
Gene ID:	604
Uniprot ID:	P41182
Synonyms:	ZNF51;BCL6A;LAZ3;ZBTB27;BCL5;B-cell CLL/lymphoma 6
Biology Area:	Transcription factors,Proto-oncogenes,Zinc Finger

Research Background

The protein encoded by this gene is a zinc finger transcription factor and contains an N-terminal POZ domain. This protein acts as a sequence-specific repressor of transcription, and has been shown to modulate the transcription of START-dependent IL-4 responses of B cells. This protein can interact with a variety of POZ-containing proteins that function as transcription corepressors. This gene is found to be frequently translocated and hypermutated in diffuse

A DRUG SCREENING EXPERT

large-cell lymphoma (DLCL), and may be involved in the pathogenesis of DLCL. Alternatively spliced transcript variants encoding different protein isoforms have been found for this gene. [provided by RefSeq].

Inhibitor · Natural Compounds · Compound Libraries · Recombinant Proteins

This product is for Research Use Only · Not for Human or Veterinary or Therapeutic Use

Tel:781-999-4286 E_mail:info@targetmol.com Address:34 Washington Street,Wellesley Hills,MA 02481