

Anti-BCL2 Polyclonal Antibody 4

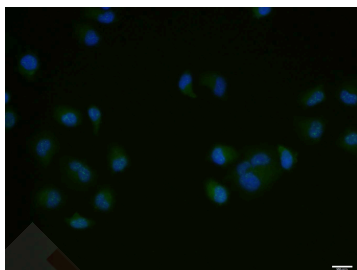
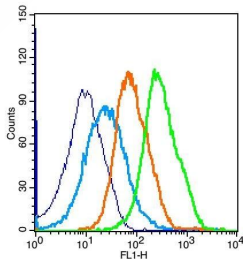
Product Details

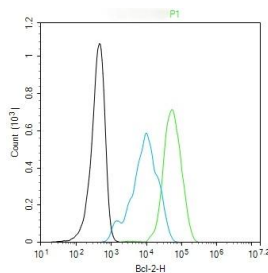
Ig Type: IgG
Reactivity: Human, Mouse (predicted: Rat)
Molecular Weight: Theoretical: 26 kDa.
Purification: Protein A purified

Applications

Verified Activity:

- Blank control: mouse splenocytes (blue)
 Isotype Control Antibody: Rabbit IgG (orange);
 Secondary Antibody: Goat anti-rabbit IgG-FITC (white blue),
 Dilution: 1:100 in 1 X PBS containing 0.5% BSA;
 Primary Antibody Dilution: 1 μ L in 100 μ L 1X PBS containing 0.5% BSA (green).
- Hela cell; 4% Paraformaldehyde-fixed; Triton X-100 at room temperature for 20 min;
 Blocking buffer (normal goat serum) at 37°C for 20 min; Antibody incubation with (Bcl-2)
 polyclonal Antibody, Unconjugated (TMAB-00199) 1:100, 90 minutes at 37°C; followed by a
 conjugated Goat Anti-Rabbit IgG antibody at 37°C for 90 minutes, DAPI (blue) was used to stain
 the cell nucleus.
- The Hela (H) cells were fixed with 4% PFA (10 min at room temperature) and then
 permeabilized with 90% ice-cold methanol for 20 min at -20°C, the cells then were incubated in
 5% BSA to block non-specific protein-protein interactions (30 min at room temperature).
 Primary Antibody (green): Rabbit Anti-Bcl-2 antibody (TMAB-00199): 1 μ g/ 10^6 cells;
 Secondary Antibody (white blue): Goat anti-Rabbit IgG-FITC: 1 μ g/test. Blank control (black):
 PBS.





Application: FCM,ICC/IF

Recommended FCM=1 µg/Test; ICC/IF=1:100-500

Properties

Stability & Storage: Store at -20°C or -80°C for 12 months. Avoid repeated freeze-thaw cycles.

Shipping: Shipping with blue ice.

Antigen Details

Immunogen: KLH conjugated synthetic peptide: human Bcl-2

Antigen Species: Human

Gene ID: 596

Uniprot ID: P10415

Synonyms: Bcl-2;PPP1R50;B-cell CLL/lymphoma 2

Biology Area: Cellular metabolic process,Response to hypoxia,Bcl 2 family,Metabolism,Bcl 2 family,Cell survival & death,Oncoproteins,Bcl2 Family,Apoptosis marker and proteins ELISA kits,Apoptosis, Hypoxia,Mitochondrial markers,Cancer,Mitochondrial

Research Background

The Bcl-2 gene was isolated at the chromosomal breakpoint of t(14;18)-bearing follicular B cell lymphomas(1,2).Bcl-2 blocks cell death following a variety of stimuli and confers a death-sparing effect to certain hematopoietic cell lines following growth factor withdrawal (3,5).Bcl-2 appears to function in several subcellular locations yet lacks any known motifs that would confer insight into its mechanism of action (6,7).A more recently identified protein, designated Bax p21(i.e., Bcl-associated X protein),has extensive amino acid homology with Bcl-2 and both homodimerizes and forms heterodimers with Bcl-2(8). Overexpression of Bax accelerates apoptotic death induced by cytokine deprivation in an IL-3 dependent cell line and Bax also counters the death repressor activity of Bcl-2(8).

Inhibitor · Natural Compounds · Compound Libraries · Recombinant Proteins

This product is for Research Use Only· Not for Human or Veterinary or Therapeutic Use

Tel:781-999-4286 E_mail:info@targetmol.com Address:34 Washington Street,Wellesley Hills,MA 02481