

Anti-BCL2 Polyclonal Antibody 3

Product Details

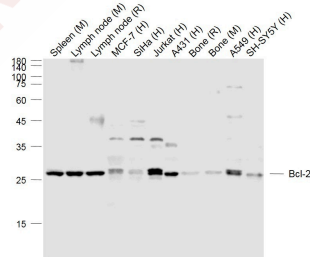
Ig Type: IgG
 Reactivity: Human,Mouse,Rat
 Molecular Weight: Theoretical: 26 kDa.
 Purification: Protein A purified

Applications

Sample:

Lane 1: Spleen (Mouse) Lysate at 40 µg
 Lane 2: Lymphnode (Mouse) Lysate at 40 µg
 Lane 3: Lymphnode (Rat) Lysate at 40 µg
 Lane 4: MCF-7 (Human) Cell Lysate at 30 µg
 Lane 5: SiHa (Human) Cell Lysate at 30 µg
 Lane 6: Jurkat (Human) Cell Lysate at 30 µg
 Lane 7: A431 (Human) Cell Lysate at 30 µg
 Lane 8: Bone (Rat) Lysate at 40 µg
 Lane 9: Bone (Mouse) Lysate at 40 µg
 Lane 10: A549 (Human) Cell Lysate at 30 µg
 Lane 11: SH-SY5Y (Human) Cell Lysate at 30 µg
 Primary: Anti-Bcl-2 (TMAB-00198) at 1/1000 dilution
 Secondary: IRDye800CW Goat Anti-Rabbit IgG at 1/20000 dilution
 Predicted band size: 26 kDa
 Observed band size: 26 kDa

Verified Activity:



Application: ELISA,ICC/IF,IF,IHC-Fr,IHC-P,WB

Recommended WB: 1:500-2000; IHC-P: 1:100-500; IHC-Fr: 1:100-300; ICC/IF: 1:100-500; IF: 1:200-1000; ELISA: 1:10000

Properties

Stability & Storage: Store at -20°C or -80°C for 12 months. Avoid repeated freeze-thaw cycles.

Shipping: Shipping with blue ice.

Antigen Details

Immunogen:	KLH conjugated synthetic peptide: human Bcl-2
Antigen Species:	Human
Gene ID:	596
Uniprot ID:	P10415
Synonyms:	Bcl-2;PPP1R50;B-cell CLL/lymphoma 2
Biology Area:	Cellular metabolic process,Response to hypoxia,Bcl 2 family,Metabolism,Bcl 2 family,Cell survival & death,Oncoproteins,Bcl2 Family,Apoptosis marker and proteins ELISA kits,Apoptosis, Hypoxia,Mitochondrial markers,Cancer,Mitochondrial

Research Background

The Bcl-2 gene was isolated at the chromosomal breakpoint of t(14;18)-bearing follicular B cell lymphomas(1,2).Bcl-2 blocks cell death following a variety of stimuli and confers a death-sparing effect to certain hematopoietic cell lines following growth factor withdrawal (3,5).Bcl-2 appears to function in several subcellular locations yet lacks any known motifs that would confer insight into its mechanism of action (6,7).A more recently identified protein, designated Bax p21(i.e., Bcl-associated X protein),has extensive amino acid homology with Bcl-2 and both homodimerizes and forms heterodimers with Bcl-2(8). Overexpression of Bax accelerates apoptotic death induced by cytokine deprivation in an IL-3 dependent cell line and Bax also counters the death repressor activity of Bcl-2(8).

Inhibitor · Natural Compounds · Compound Libraries · Recombinant Proteins

This product is for Research Use Only· Not for Human or Veterinary or Therapeutic Use

Tel:781-999-4286 E_mail:info@targetmol.com Address:34 Washington Street,Wellesley Hills,MA 02481