

## Anti-BCL2 Polyclonal Antibody 2

### Product Details

Ig Type: IgG  
 Reactivity: Human (predicted:Mouse,Rat,Pig,Cow,Sheep)  
 Molecular Weight: Theoretical: 26 kDa. Actual: 26 kDa.  
 Purification: Protein A purified

### Applications

1. Blank control: HL-60. Primary Antibody (green line): Rabbit Anti-Bcl-2 antibody (TMAB-00197)

Dilution: 1 µg/10<sup>6</sup> cells;

Isotype Control Antibody (orange line): Rabbit IgG.

Secondary Antibody: Goat anti-rabbit IgG-AF488

Dilution: 1 µg/test.

Protocol

The cells were fixed with 4% PFA (10 min at room temperature) and then permeabilized with 0.1%PBST for 20 min at room temperature. The cells were then incubated in 5% BSA to block non-specific protein-protein interactions for 30 min at room temperature. Cells stained with Primary Antibody for 30 min at room temperature. The secondary antibody used for 40 min at room temperature.

Verified Activity:

2. Blank control (blue): K562 (fixed with 2% paraformaldehyde for 10 min at 37°C). Primary Antibody: Rabbit Anti-Bcl-2 antibody (TMAB-00197,Green); Dilution: 0.2 µg in 100 µL 1X PBS containing 0.5% BSA; Isotype Control Antibody: Rabbit Igg (orange),used under the same conditions; Secondary Antibody: Goat anti-rabbit IgG-FITC (white blue), Dilution: 1:200 in 1 X PBS containing 0.5% BSA.

3. Sample:

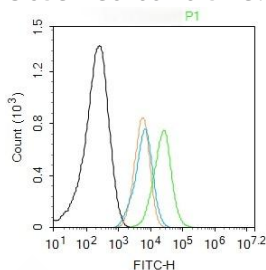
Lane 1: Recombinant human Bcl-2 protein, C-His

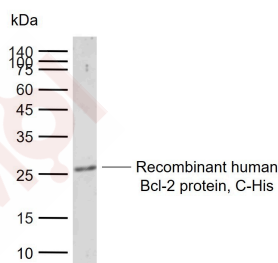
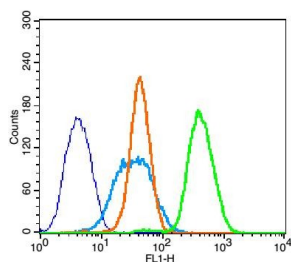
Primary: Anti-Bcl-2 (TMAB-00197) at 1/1000 dilution

Secondary: IRDye800CW Goat Anti-Rabbit IgG at 1/20000 dilution

Predicted band size: 26 kDa

Observed band size: 26 kDa





Application: FCM,WB

Recommended WB: 1:500-2000; FCM: 1µg/Test

## Properties

Stability & Storage: Store at -20°C or -80°C for 12 months. Avoid repeated freeze-thaw cycles.

Shipping: Shipping with blue ice.

## Antigen Details

Immunogen: KLH conjugated synthetic peptide: human Bcl-2

Antigen Species: Human

Gene ID: 596

Uniprot ID: P10415

Synonyms: PPP1R50;Bcl-2;B-cell CLL/lymphoma 2

Biology Area: Cellular metabolic process,Response to hypoxia,Bcl 2 family,Metabolism,Bcl 2 family,Cell survival & death,Oncoproteins,Bcl2 Family,Apoptosis marker and proteins ELISA kits,Apoptosis, Hypoxia,Mitochondrial markers,Cancer,Mitochondrial

## Research Background

The Bcl-2 gene was isolated at the chromosomal breakpoint of t(14;18)-bearing follicular B cell lymphomas(1,2).Bcl-2 blocks cell death following a variety of stimuli and confers a death-sparing effect to certain hematopoietic cell lines following growth factor withdrawal (3,5).Bcl-2 appears to function in several subcellular locations yet lacks any known motifs that would confer insight into its mechanism of action (6,7).A more recently identified protein, designated Bax p21(i.e., Bcl-associated X protein ),has extensive amino acid homology with Bcl-2 and both homodimerizes and forms heterodimers with Bcl-2(8). Overexpression of Bax accelerates apoptotic death induced by cytokine deprivation in an IL-3 dependent cell line and Bax also counters the death repressor activity of Bcl-2(8).

**Inhibitor · Natural Compounds · Compound Libraries · Recombinant Proteins**

This product is for Research Use Only· Not for Human or Veterinary or Therapeutic Use

Tel:781-999-4286 E\_mail:info@targetmol.com Address:34 Washington Street,Wellesley Hills,MA 02481