

Anti-BCL2 Antibody (5A806)

Product Details

Ig Type:	IgG1
Reactivity:	Human,Rat (predicted:Mouse,Dog,Pig,Cow,Horse,Rabbit,Sheep,GuineaPig)
Molecular Weight:	Theoretical: 26 kDa. Actual: 26 kDa.
Clone:	5A806
Purification:	Protein G purified

Applications

1. Paraformaldehyde-fixed, paraffin embedded (rat lung); Antigen retrieval by boiling in sodium citrate buffer (pH6.0) for 15 min; Block endogenous peroxidase by 3% hydrogen peroxide for 20 min; Blocking buffer (normal goat serum) at 37°C for 30 min; Antibody incubation with (bcl-2) Polyclonal Antibody, Unconjugated (TMAB-00195) at 1:200 overnight at 4°C, followed by operating according to SP Kit (Mouse) instructions and DAB staining.
2. Paraformaldehyde-fixed, paraffin embedded (human breast carcinoma); Antigen retrieval by boiling in sodium citrate buffer (pH6.0) for 15 min; Block endogenous peroxidase by 3% hydrogen peroxide for 20 min; Blocking buffer (normal goat serum) at 37°C for 30 min; Antibody incubation with (bcl-2) Polyclonal Antibody, Unconjugated (TMAB-00195) at 1:200 overnight at 4°C, followed by operating according to SP Kit (Mouse) instructions and DAB staining.
3. Paraformaldehyde-fixed, paraffin embedded (human breast carcinoma); Antigen retrieval by boiling in sodium citrate buffer (pH6.0) for 15 min; Block endogenous peroxidase by 3% hydrogen peroxide for 20 min; Blocking buffer (normal goat serum) at 37°C for 30 min; Antibody incubation with (bcl-2) Polyclonal Antibody, Unconjugated (TMAB-00195) at 1:200 overnight at 4°C, followed by operating according to SP Kit (Mouse) instructions and DAB staining.
4. Sample:
 LOVO (Human) Cell Lysate at 30 µg
 Primary: Anti-Bcl-2 (TMAB-00195) at 1/1000 dilution
 Secondary: IRDye800CW Goat Anti-Mouse IgG at 1/20000 dilution
 Predicted band size: 26 kDa
 Observed band size: 26 kDa
5. Tissue/cell: Hela cell; 4% Paraformaldehyde-fixed; Triton X-100 at room temperature for 20 min; Blocking buffer (normal goat serum) at 37°C for 20 min; Antibody incubation with (Bcl-2) monoclonal Antibody, Unconjugated 1:100, 90 minutes at 37°C; followed by a CY3 conjugated Goat Anti-Mouse IgG antibody at 37°C for 90 minutes, DAPI (blue) was used to stain the cell nucleus.
6. Paraformaldehyde-fixed, paraffin embedded (human pancreatic cancer); Antigen retrieval by boiling in sodium citrate buffer (pH6.0) for 15 min; Block endogenous peroxidase by 3% hydrogen peroxide for 20 min; Blocking buffer (normal goat serum) at 37°C for 30 min; Antibody incubation with (bcl-2) Polyclonal Antibody, Unconjugated (TMAB-00195) at 1:200 overnight at 4°C, followed by operating according to SP Kit (Mouse) instructions and DAB staining.
7. Paraformaldehyde-fixed, paraffin embedded (rat lymphoid); Antigen retrieval by boiling in sodium citrate buffer (pH6.0) for 15 min; Block endogenous peroxidase by 3% hydrogen

Verified Activity:

peroxide for 20 min; Blocking buffer (normal goat serum) at 37°C for 30 min; Antibody incubation with (bcl-2) Polyclonal Antibody, Unconjugated (TMAB-00195) at 1:200 overnight at 4°C, followed by operating according to SP Kit (Mouse) instructions and DAB staining.

8. Paraformaldehyde-fixed, paraffin embedded (human pancreatic cancer); Antigen retrieval by boiling in sodium citrate buffer (pH6.0) for 15 min; Block endogenous peroxidase by 3% hydrogen peroxide for 20 min; Blocking buffer (normal goat serum) at 37°C for 30 min; Antibody incubation with (bcl-2) Polyclonal Antibody, Unconjugated (TMAB-00195) at 1:2000 overnight at 4°C, followed by operating according to SP Kit (Mouse) instructions and DAB staining.

9. Sample:

LOVO Cell (Human) Lysate at 40 µg

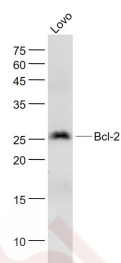
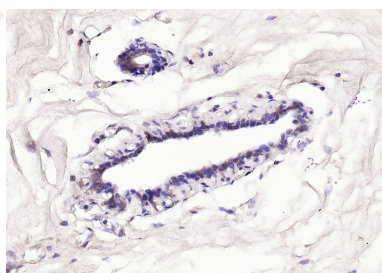
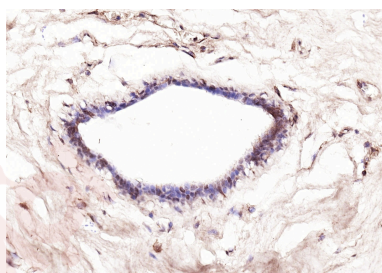
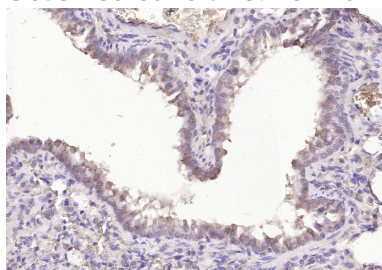
MCF-7 Cell (Human) Lysate at 40 µg

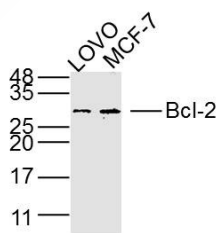
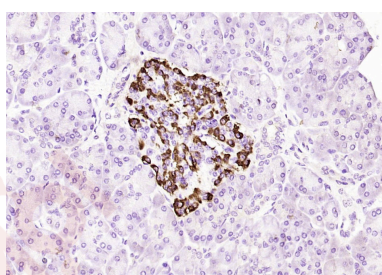
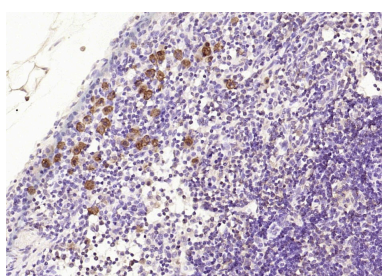
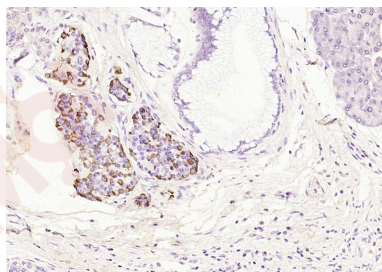
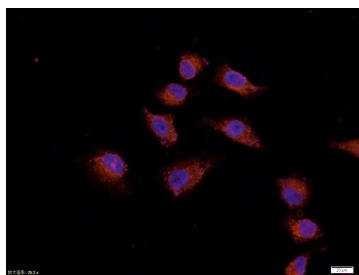
Primary: Anti-Bcl-2 (TMAB-00195) at 1/2 000 dilution

Secondary: IRDye800CW Goat Anti-Mouse IgG at 1/20000 dilution

Predicted band size: 26 kDa

Observed band size: 28 kDa





Application: ICC/IF,IF,IHC-Fr,IHC-P,WB

Recommended ICC/IF=1:100-500; IF=1:100-500; IHC-Fr=1:100-500; IHC-P=1:100-500; WB=1:500-2000

Properties

Stability & Storage: Store at -20°C or -80°C for 12 months. Avoid repeated freeze-thaw cycles.

Shipping: Shipping with blue ice.

Antigen Details

Immunogen:	KLH conjugated synthetic peptide: human Bcl-2
Antigen Species:	Human
Gene ID:	596
Uniprot ID:	P10415
Synonyms:	PPP1R50;B-cell CLL/lymphoma 2;Bcl-2
Biology Area:	Cellular metabolic process,Response to hypoxia,Bcl 2 family,Metabolism,Bcl 2 family,Cell survival & death,Oncoproteins,Bcl2 Family,Apoptosis marker and proteins ELISA kits,Apoptosis, Hypoxia,Mitochondrial markers,Cancer,Mitochondrial

Research Background

The Bcl-2 gene was isolated at the chromosomal breakpoint of t(14;18)-bearing follicular B cell lymphomas(1,2).Bcl-2 blocks cell death following a variety of stimuli and confers a death-sparing effect to certain hematopoietic cell lines following growth factor withdrawal (3,5).Bcl-2 appears to function in several subcellular locations yet lacks any known motifs that would confer insight into its mechanism of action (6,7).A more recently identified protein, designated Bax p21(i.e., Bcl-associated X protein),has extensive amino acid homology with Bcl-2 and both homodimerizes and forms heterodimers with Bcl-2(8). Overexpression of Bax accelerates apoptotic death induced by cytokine deprivation in an IL-3 dependent cell line and Bax also counters the death repressor activity of Bcl-2(8).

Inhibitor · Natural Compounds · Compound Libraries · Recombinant Proteins

This product is for Research Use Only· Not for Human or Veterinary or Therapeutic Use

Tel:781-999-4286 E_mail:info@targetmol.com Address:34 Washington Street,Wellesley Hills,MA 02481