

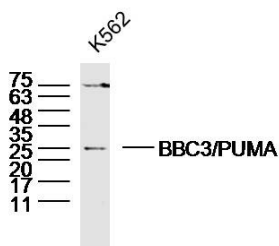
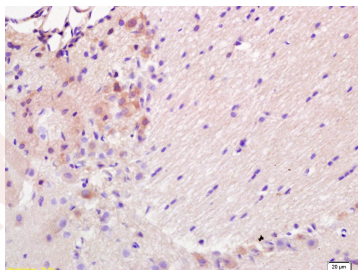
## Anti-BBC3/PUMA Polyclonal Antibody

### Product Details

Ig Type: IgG  
 Reactivity: Human,Rat (predicted:Mouse,Dog,Pig,Cow)  
 Molecular Weight: Theoretical: 21 kDa. Actual: 25 kDa.  
 Purification: Protein A purified

### Applications

1. Tissue/cell: rat brain tissue; 4% Paraformaldehyde-fixed and paraffin-embedded; Antigen retrieval: citrate buffer (0.01M, pH6.0), Boiling bathing for 15 min; Block endogenous peroxidase by 3% Hydrogen peroxide for 30 min; Blocking buffer (normal goat serum) at 37°C for 20 min;  
 Incubation: Anti-BBC3/PUMA Polyclonal Antibody, Unconjugated (TMAB-00192) 1:200, overnight at 4°C, followed by conjugation to the secondary antibody and DAb staining.  
 Verified Activity: 2. Sample: K562 Cell Lysate at 30 µg  
 Primary: Anti-BBC3 (TMAB-00192) at 1/300 dilution  
 Secondary: IRDye800CW Goat Anti-Rabbit IgG at 1/20000 dilution  
 Predicted band size: 21 kDa  
 Observed band size: 25 kDa



Application: IF,IHC-Fr,IHC-P,WB

Recommended WB: 1:500-2000; IHC-P: 1:100-500; IHC-Fr: 1:100-500; IF: 1:100-500

## A DRUG SCREENING EXPERT

---

### Properties

Stability & Storage: Store at -20°C or -80°C for 12 months. Avoid repeated freeze-thaw cycles.

Shipping: Shipping with blue ice.

---

### Antigen Details

Immunogen: KLH conjugated synthetic peptide: human BBC3

Antigen Species: Human

Gene ID: 27113

Uniprot ID: Q9BXH1

Synonyms: p53 Upregulated Modulator of Apoptosis;BCL 2 binding component 3;PUMA/JFY1;PUMA alpha;BBC3;bcl-2 binding component 3;p53 up regulated modulator of apoptosis;BBC 3;BCL2 binding component 3;JFY1;JFY 1;BBC3\_RAT;PUMA

Biology Area: Bcl 2 family, Metabolism, Bcl 2 family, Bcl2 Family, Apoptosis, Mitochondrial markers, Cancer, Mitochondrial

---

### Research Background

This gene encodes a member of the BCL-2 family of proteins. This family member belongs to the BH3-only pro-apoptotic subclass. The protein cooperates with direct activator proteins to induce mitochondrial outer membrane permeabilization and apoptosis. It can bind to anti-apoptotic Bcl-2 family members to induce mitochondrial dysfunction and caspase activation. Because of its pro-apoptotic role, this gene is a potential drug target for cancer therapy and for tissue injury. Alternative splicing results in multiple transcript variants. [provided by RefSeq, Dec 2011]

**Inhibitor · Natural Compounds · Compound Libraries · Recombinant Proteins**

This product is for Research Use Only · Not for Human or Veterinary or Therapeutic Use

Tel: 781-999-4286 E\_mail: info@targetmol.com Address: 34 Washington Street, Wellesley Hills, MA 02481