

Anti-BAMBI Polyclonal Antibody

Product Details

Ig Type:	IgG
Reactivity:	Human, Mouse (predicted: Rat, Dog, Pig, Cow, Rabbit, Sheep, Guinea Pig)
Molecular Weight:	Theoretical: 27 kDa. Actual: 30 kDa.
Purification:	Protein A purified

Applications

1. Sample:

Testis (Mouse) Lysate at 40 µg

Spleen (Mouse) Lysate at 40 µg

Primary: Anti-BAMBI (TMAB-00184) at 1/500 dilution

Secondary: IRDye800CW Goat Anti-Rabbit IgG at 1/20000 dilution

Predicted band size: 27 kDa

Observed band size: 30 kDa

2. Sample:

Lane 1: K562 (Human) Cell Lysate at 30 µg

Lane 2: MCF-7 (Human) Cell Lysate at 30 µg

Lane 3: HepG2 (Human) Cell Lysate at 30 µg

Verified Activity: Lane 4: A549 (Human) Cell Lysate at 30 µg

Primary:

Anti-BAMBI (TMAB-00184) at 1/1000 dilution

Secondary: IRDye800CW Goat Anti-Rabbit IgG at 1/20000 dilution

Predicted band size: 29 kDa

Observed band size: 30 kDa

3. Sample:

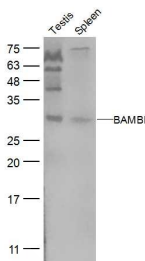
RAW264.7 (Mouse) Cell Lysate at 30 µg

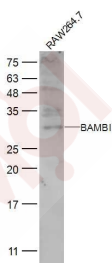
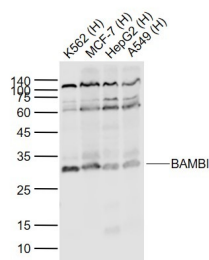
Primary: Anti-BAMBI (TMAB-00184) at 1/500 dilution

Secondary: IRDye800CW Goat Anti-Rabbit IgG at 1/20000 dilution

Predicted band size: 27 kDa

Observed band size: 30 kDa





Application: IF,IHC-Fr,WB

Recommended WB: 1:500-2000; IHC-Fr: 1:100-500; IF: 1:100-500

Properties

Stability & Storage: Store at -20°C or -80°C for 12 months. Avoid repeated freeze-thaw cycles.

Shipping: Shipping with blue ice.

Antigen Details

Immunogen: KLH conjugated synthetic peptide: human BAMBI

Antigen Species: Human

Gene ID: 25805

Uniprot ID: Q13145

Synonyms: 2610003H06Rik;BMP and activin membrane-bound inhibitor

Biology Area: TGF, Surface Molecules

Research Background

BAMBI is a membrane spanning glycoprotein that acts as a negative regulator of TGF- β signaling during development. The BAMBI family of proteins are related to type I TGF- β receptor family, however, BAMBI is a pseudoreceptor that lacks an intracellular serine/threonine kinase domain. BAMBI transcription regulation is under the influence of β -catenin, BMP, smad3 and smad4. BAMBI expression can increase in colorectal and hepatocellular carcinomas relative to non-cancerous tissues. BAMBI is expressed at high levels during odontogenesis. BAMBI is coexpressed with Bmp-4 during early *Xenopus* embryogenesis and can be detected in poorly metastatic human melanoma cell lines.

Inhibitor · Natural Compounds · Compound Libraries · Recombinant Proteins

This product is for Research Use Only · Not for Human or Veterinary or Therapeutic Use

Tel: 781-999-4286 E_mail: info@targetmol.com Address: 34 Washington Street, Wellesley Hills, MA 02481