

Anti-BACE1 Polyclonal Antibody

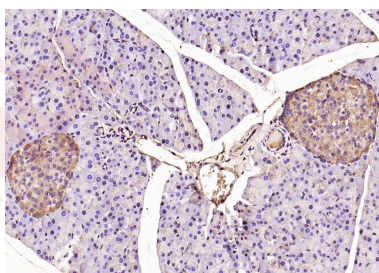
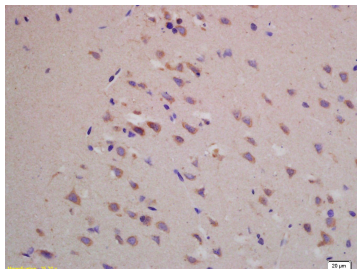
Product Details

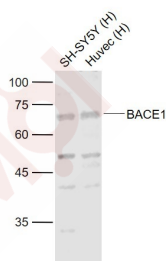
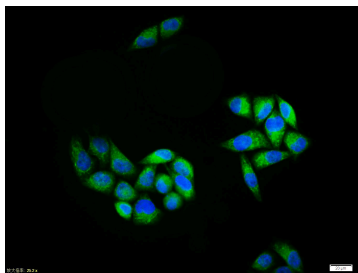
Ig Type:	IgG
Reactivity:	Human, Mouse, Rat (predicted: Chicken, Dog, Pig, Rabbit, Guinea Pig)
Molecular Weight:	Theoretical: 51 kDa. Actual: 68 kDa.
Purification:	Protein A purified

Applications

Verified Activity:

1. Paraformaldehyde-fixed, paraffin embedded (rat brain tissue); Antigen retrieval by boiling in sodium citrate buffer (pH6.0) for 15 min; Block endogenous peroxidase by 3% hydrogen peroxide for 20 min; Blocking buffer (normal goat serum) at 37°C for 30 min; Antibody incubation with (BACE1) Polyclonal Antibody, Unconjugated (TMAB-00180) at 1:400 overnight at 4°C, followed by a conjugated secondary for 20 min and DAB staining.
2. Paraformaldehyde-fixed, paraffin embedded (mouse pancreas); Antigen retrieval by boiling in sodium citrate buffer (pH6.0) for 15 min; Block endogenous peroxidase by 3% hydrogen peroxide for 20 min; Blocking buffer (normal goat serum) at 37°C for 30 min; Antibody incubation with (BACE1) Polyclonal Antibody, Unconjugated (TMAB-00180) at 1:200 overnight at 4°C, followed by operating according to SP Kit (Rabbit) instructions and DAB staining.
3. Hela cell; 4% Paraformaldehyde-fixed; Triton X-100 at room temperature for 20 min; Blocking buffer (normal goat serum) at 37°C for 20 min; Antibody incubation with (BACE1) polyclonal Antibody, Unconjugated (TMAB-00180) 1:100, 90 minutes at 37°C; followed by a conjugated Goat Anti-Rabbit IgG antibody at 37°C for 90 minutes, DAPI (blue) was used to stain the cell nucleus.
4. Sample:
Lane 1: SH-SY5Y (Human) Cell Lysate at 30 µg
Lane 2: Huvec (Human) Cell Lysate at 30 µg
Primary: Anti-BACE1 (TMAB-00180) at 1/1000 dilution
Secondary: IRDye800CW Goat Anti-Rabbit IgG at 1/20000 dilution
Predicted band size: 60-70 kDa
Observed band size: 68 kDa





Application: ICC/IF,IF,IHC-Fr,IHC-P,WB

Recommended ICC/IF=1:100-500; IF=1:100-500; IHC-Fr=1:100-500; IHC-P=1:100-500; WB=1:500-2000

Properties

Stability & Storage: Store at -20°C or -80°C for 12 months. Avoid repeated freeze-thaw cycles.

Shipping: Shipping with blue ice.

Antigen Details

Immunogen: KLH conjugated synthetic peptide: human BACE1

Antigen Species: Human

Gene ID: 23621

Uniprot ID: P56817

Synonyms: ASP2; β -site APP-cleaving enzyme 1;BACE;beta-site APP-cleaving enzyme 1;HSPC104

Biology Area: BACEs,Proteases

Research Background

Cerebral deposition of amyloid beta peptide is an early and critical feature of Alzheimer's disease. Amyloid beta peptide is generated by proteolytic cleavage of amyloid precursor protein(APP) by two proteases, one of which is the protein encoded by this gene. The encoded protein, a member of the peptidase A1 protein family, is a type I integral membrane glycoprotein and aspartic protease that is found mainly in the Golgi. Multiple transcript variants encoding different isoforms have been described for this gene.

Inhibitor · Natural Compounds · Compound Libraries · Recombinant Proteins

This product is for Research Use Only· Not for Human or Veterinary or Therapeutic Use

Tel:781-999-4286 E_mail:info@targetmol.com Address:34 Washington Street,Wellesley Hills,MA 02481