

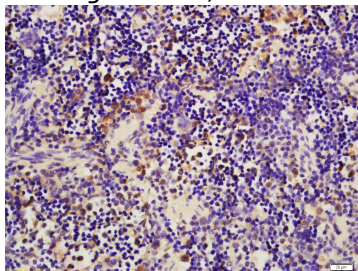
## Anti-B2M/beta 2-Microglobulin Polyclonal Antibody

## Product Details

Ig Type:	IgG
Reactivity:	Mouse (predicted:Human,Rat)
Molecular Weight:	Theoretical: 12 kDa.
Purification:	Protein A purified

## Applications

Verified Activity: Tissue/cell: mouse spleen tissue; 4% Paraformaldehyde-fixed and paraffin-embedded; Antigen retrieval: citrate buffer (0.01M, pH6.0), Boiling bathing for 15 min; Block endogenous peroxidase by 3% Hydrogen peroxide for 30 min; Blocking buffer (normal goat serum) at 37°C for 20 min; Incubation: Anti-beta 2 Microglobulin Polyclonal Antibody, Unconjugated (TMAB-00179) 1:200, overnight at 4°C, followed by conjugation to the secondary antibody and DAb staining.



Application:	IF,IHC-Fr,IHC-P
Recommended	IHC-P: 1:100-500; IHC-Fr: 1:100-500; IF: 1:100-500

## Properties

Stability & Storage:	Store at -20°C or -80°C for 12 months. Avoid repeated freeze-thaw cycles.
Shipping:	Shipping with blue ice.

## Antigen Details

Immunogen:	KLH conjugated synthetic peptide: human beta 2 Microglobulin
Antigen Species:	Human
Gene ID:	567
Uniprot ID:	P61769
Synonyms:	Beta-2-microglobulin;β-2-microglobulin;B2M;B2M/β 2-Microglobulin
Biology Area:	Globulins,HLA,Serum Proteins

## Research Background

This gene encodes a serum protein found in association with the major histocompatibility complex (MHC) class I heavy chain on the surface of nearly all nucleated cells. The protein has a predominantly beta-pleated sheet structure that can form amyloid fibrils in some pathological conditions. A mutation in this gene has been shown to

## A DRUG SCREENING EXPERT

---

result in hypercatabolic hypoproteinemia.[provided by RefSeq, Sep 2009].

**Inhibitor · Natural Compounds · Compound Libraries · Recombinant Proteins**

This product is for Research Use Only · Not for Human or Veterinary or Therapeutic Use

Tel:781-999-4286 E\_mail:info@targetmol.com Address:34 Washington Street,Wellesley Hills,MA 02481