

Anti-AXL Polyclonal Antibody

Product Details

Ig Type:	IgG
Reactivity:	Human (predicted:Mouse,Rat,Dog,Horse,Rabbit)
Molecular Weight:	Theoretical: 95 kDa. Actual: 138 kDa.
Purification:	Protein A purified

Applications

1. Tissue/cell: human colon carcinoma; 4% Paraformaldehyde-fixed and paraffin-embedded; Antigen retrieval: citrate buffer (0.01M, pH6.0), Boiling bathing for 15 min; Block endogenous peroxidase by 3% Hydrogen peroxide for 30 min; Blocking buffer (normal goat serum) at 37°C for 20 min;

Incubation: Anti-AXL/UFO Polyclonal Antibody, Unconjugated (TMAB-00177) 1:200, overnight at 4°C, followed by conjugation to the secondary antibody and DAb staining.

2. Tissue/cell: human lung carcinoma; 4% Paraformaldehyde-fixed and paraffin-embedded; Antigen retrieval: citrate buffer (0.01M, pH6.0), Boiling bathing for 15 min; Block endogenous peroxidase by 3% Hydrogen peroxide for 30 min; Blocking buffer (normal goat serum) at 37°C for 20 min;

Incubation: Anti-AXL/UFO Polyclonal Antibody, Unconjugated (TMAB-00177) 1:200, overnight at 4°C, followed by conjugation to the secondary antibody and DAb staining.

3. Sample:

MKN45 (Human) Cell Lysate at 30 µg

SW480 (Human) Cell Lysate at 30 µg

FHc (Human) Cell Lysate at 30 µg

Primary: Anti-AXL (TMAB-00177) at 1/1000 dilution

Secondary: IRDye800CW Goat Anti-Rabbit IgG at 1/20000 dilution

Predicted band size: 140/120/98 kDa

Observed band size: 120 kDa

4. Sample:

Testis (Mouse) Lysate at 40 µg

Hela (Human) Cell Lysate at 30 µg

Primary: Anti-AXL (TMAB-00177) at 1/1000 dilution

Secondary: IRDye800CW Goat Anti-Rabbit IgG at 1/20000 dilution

Predicted band size: 140/120/65 kDa

Observed band size: 120 kDa

5. Sample:

LOVO (Human) Cell Lysate at 40 µg

K562 (Human) Cell Lysate at 40 µg

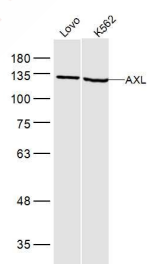
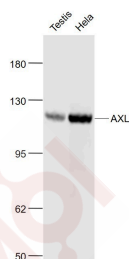
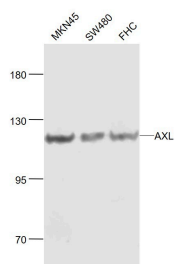
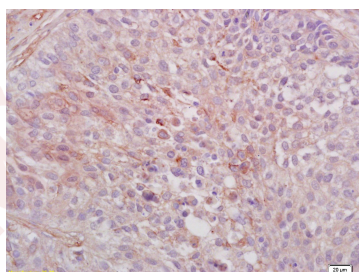
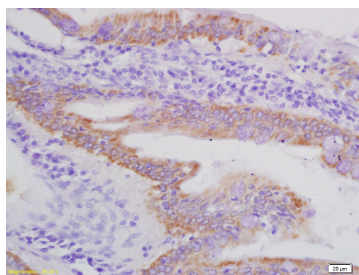
Primary: Anti-AXL (TMAB-00177) at 1/500 dilution

Secondary: IRDye800CW Goat Anti-Rabbit IgG at 1/20000 dilution

Predicted band size: 95 kDa

Observed band size: 95 kDa

Verified Activity:



Application: IF,IHC-Fr,IHC-P,WB

Recommended WB: 1:500-2000; IHC-P: 1:100-500; IHC-Fr: 1:100-500; IF: 1:100-500

Properties

Stability & Storage: Store at -20°C or -80°C for 12 months. Avoid repeated freeze-thaw cycles.

Shipping: Shipping with blue ice.

Antigen Details

Immunogen:	KLH conjugated synthetic peptide: human AXL
Antigen Species:	Human
Gene ID:	558
Uniprot ID:	P30530
Synonyms:	AXL receptor tyrosine kinase
Biology Area:	Kinases/phosphatases,Signal transducers,Signal transduction,Kinases/Phosphatases,Receptor Tyrosine Kinases,Tumor Associated

Research Background

The protein encoded by this gene is a member of the receptor tyrosine kinase subfamily. Although it is similar to other receptor tyrosine kinases, the Axl protein represents a unique structure of the extracellular region that juxtaposes IgL and FNIII repeats. It transduces signals from the extracellular matrix into the cytoplasm by binding growth factors such as vitamin K dependent protein growth arrest specific gene 6. It is involved in the stimulation of cell proliferation. This receptor can also mediate cell aggregation by homophilic binding. Axl is a chronic myelogenous leukemia associated oncogene and also associated with colon cancer and melanoma. The Axl gene is evolutionarily conserved between vertebrate species. This gene has two different alternatively spliced transcript variants (AXL1 and AXL2).

Inhibitor · Natural Compounds · Compound Libraries · Recombinant Proteins

This product is for Research Use Only · Not for Human or Veterinary or Therapeutic Use

Tel:781-999-4286 E_mail:info@targetmol.com Address:34 Washington Street,Wellesley Hills,MA 02481