

## Anti-Atrial natriuretic factor Polyclonal Antibody

### Product Details

Ig Type:	IgG
Reactivity:	Human, Mouse, Rat (predicted: Dog, Pig, Cow, Horse, Rabbit, Sheep, Guinea Pig)
Molecular Weight:	Theoretical: 3/17 kDa. Actual: 15 kDa.
Purification:	Protein A purified

### Applications

#### 1. Sample:

Heart (Mouse) Lysate at 40 µg

Heart (Rat) Lysate at 40 µg

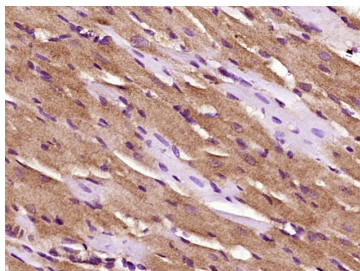
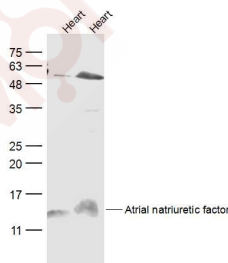
Primary: Anti-Atrial natriuretic factor (TMAB-00172) at 1/300 dilution

Secondary: IRDye800CW Goat Anti-Rabbit IgG at 1/20000 dilution

Predicted band size: 3/17 kDa

Verified Activity: Observed band size: 15 kDa

2. Paraformaldehyde-fixed, paraffin embedded (Rat heart); Antigen retrieval by boiling in sodium citrate buffer (pH6.0) for 15 min; Block endogenous peroxidase by 3% hydrogen peroxide for 20 min; Blocking buffer (normal goat serum) at 37°C for 30 min; Antibody incubation with (Atrial natriuretic factor) Polyclonal Antibody, Unconjugated (TMAB-00172) at 1:400 overnight at 4°C, followed by operating according to SP Kit (Rabbit) instructions and DAB staining.



Application: IF, IHC-Fr, IHC-P, WB

Recommended WB: 1:500-2000; IHC-P: 1:100-500; IHC-Fr: 1:100-500; IF: 1:100-500

### Properties

Stability & Storage: Store at -20°C or -80°C for 12 months. Avoid repeated freeze-thaw cycles.

Shipping: Shipping with blue ice.

---

### Antigen Details

Immunogen: KLH conjugated synthetic peptide: human ANP

Antigen Species: Human

Gene ID: 4878

Uniprot ID: P01160

Synonyms: Cardiodilatin;Atrial natriuretic factor;ANP;Natriuretic peptides A;PND;CDP;Prepronatriodilatin; Nppa;CDD-ANF;CDD ANF;Atrial natriuretic peptide;ANF

Biology Area: Blood Pressure regulation,Blood,Hormones,Hypertrophy,Hormones

---

### Research Background

The protein encoded by this gene belongs to the natriuretic peptide family. Natriuretic peptides are implicated in the control of extracellular fluid volume and electrolyte homeostasis. This protein is synthesized as a large precursor (containing a signal peptide), which is processed to release a peptide from the N-terminus with similarity to vasoactive peptide, cardiodilatin, and another peptide from the C-terminus with natriuretic-diuretic activity. Mutations in this gene have been associated with atrial fibrillation familial type 6. [provided by RefSeq, Sep 2009].

**Inhibitor · Natural Compounds · Compound Libraries · Recombinant Proteins**

This product is for Research Use Only · Not for Human or Veterinary or Therapeutic Use

Tel:781-999-4286 E\_mail:info@targetmol.com Address:34 Washington Street,Wellesley Hills,MA 02481