

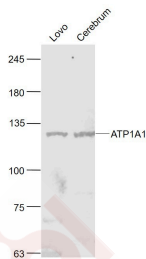
Anti-ATP1A1 Polyclonal Antibody

Product Details

Ig Type:	IgG
Reactivity:	Human, Mouse (predicted: Rat, Chicken, Pig, Rabbit, Guinea Pig)
Molecular Weight:	Theoretical: 113 kDa. Actual: 113 kDa.
Purification:	Protein A purified

Applications

Sample:	LOVO (Human) Cell Lysate at 30 μ g Cerebrum (Mouse) Lysate at 40 μ g
Verified Activity:	Primary: Anti-ATP1A1 (TMAB-00165) at 1/1000 dilution Secondary: IRDye800CW Goat Anti-Rabbit IgG at 1/20000 dilution Predicted band size: 113 kDa Observed band size: 113 kDa



Application:	WB
Recommended	WB: 1:500-2000

Properties

Stability & Storage:	Store at -20°C or -80°C for 12 months. Avoid repeated freeze-thaw cycles.
Shipping:	Shipping with blue ice.

Antigen Details

Immunogen:	KLH conjugated synthetic peptide: human ATP1A1
Antigen Species:	Human
Gene ID:	476
Uniprot ID:	P05023
Synonyms:	EC 3.6.3.9; ATP1A1; Sodium pump subunit alpha-1; Na(+)/K(+) ATPase alpha-1 subunit; Sodium/potassium-transporting ATPase subunit alpha-1

Research Background

The protein encoded by this gene belongs to the family of P-type cation transport ATPases, and to the subfamily of Na⁺/K⁺-ATPases. Na⁺/K⁺-ATPase is an integral membrane protein responsible for establishing and maintaining the electrochemical gradients of Na and K ions across the plasma membrane. These gradients are essential for

A DRUG SCREENING EXPERT

osmoregulation, for sodium-coupled transport of a variety of organic and inorganic molecules, and for electrical excitability of nerve and muscle. This enzyme is composed of two subunits, a large catalytic subunit (alpha) and a smaller glycoprotein subunit (beta). The catalytic subunit of Na⁺/K⁺ -ATPase is encoded by multiple genes. This gene encodes an alpha 1 subunit. Multiple transcript variants encoding different isoforms have been found for this gene. [provided by RefSeq, May2009].

Inhibitor · Natural Compounds · Compound Libraries · Recombinant Proteins

This product is for Research Use Only · Not for Human or Veterinary or Therapeutic Use

Tel:781-999-4286 E_mail:info@targetmol.com Address:34 Washington Street,Wellesley Hills,MA 02481