

Anti-ATF-6 Polyclonal Antibody 2

Product Details

Ig Type:	IgG
Reactivity:	Human, Mouse, Rat (predicted: Dog, Pig, Cow, Horse, Rabbit, Sheep)
Molecular Weight:	Theoretical: 75 kDa. Actual: 75 kDa.
Purification:	Protein A purified

Applications

1. Sample:

Lane 1: Human HUVEC cell Lysates

Lane 2: Human Raji cell Lysates

Lane 3: Human Jurkat cell Lysates

Lane 4: Human Hela cell Lysates

Primary: Anti-ATF6 (TMAB-00161) at 1/1000 dilution

Secondary: IRDye800CW Goat Anti-Rabbit IgG at 1/20000 dilution

Predicted band size: 75 kDa

Observed band size: 110 kDa

2. Sample:

K562 (Human) Cell Lysate at 30 µg

Primary: Anti-ATF6 (TMAB-00161) at 1/1000 dilution

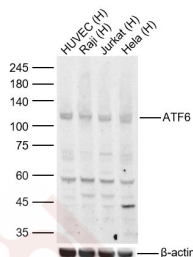
Verified Activity: Secondary: IRDye800CW Goat Anti-Rabbit IgG at 1/20000 dilution

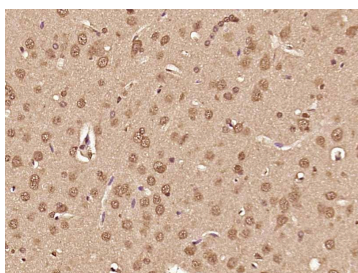
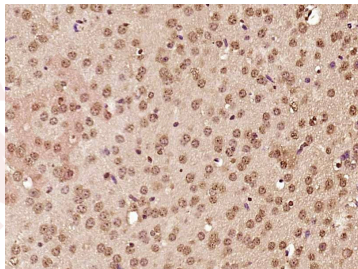
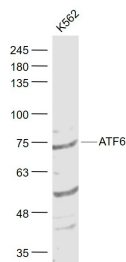
Predicted band size: 75 kDa

Observed band size: 75 kDa

3. Paraformaldehyde-fixed, paraffin embedded (Mouse brain); Antigen retrieval by boiling in sodium citrate buffer (pH6.0) for 15 min; Block endogenous peroxidase by 3% hydrogen peroxide for 20 min; Blocking buffer (normal goat serum) at 37°C for 30 min; Antibody incubation with (ATF6) Polyclonal Antibody, Unconjugated (TMAB-00161) at 1:400 overnight at 4°C, followed by operating according to SP Kit (Rabbit) instructions and DAB staining.

4. Paraformaldehyde-fixed, paraffin embedded (Rat brain); Antigen retrieval by boiling in sodium citrate buffer (pH6.0) for 15 min; Block endogenous peroxidase by 3% hydrogen peroxide for 20 min; Blocking buffer (normal goat serum) at 37°C for 30 min; Antibody incubation with (ATF6) Polyclonal Antibody, Unconjugated (TMAB-00161) at 1:400 overnight at 4°C, followed by operating according to SP Kit (Rabbit) instructions and DAB staining.





Application: IF, IHC-Fr, IHC-P, WB

Recommended WB: 1:500-2000; IHC-P: 1:100-500; IHC-Fr: 1:100-500; IF: 1:100-500

Properties

Stability & Storage: Store at -20°C or -80°C for 12 months. Avoid repeated freeze-thaw cycles.

Shipping: Shipping with blue ice.

Antigen Details

Immunogen: KLH conjugated synthetic peptide: human ATF6

Antigen Species: Human

Gene ID: 22926

Uniprot ID: P18850

Synonyms: ESTM49; ATF 6; Cyclic AMP dependent transcription factor ATF 6 alpha; Processed cyclic AMP-dependent transcription factor ATF-6 alpha; Activating transcription factor 6; cAMP-dependent transcription factor ATF-6 alpha; ATF6A; ATF6 alpha; Activating transcription factor 6 alpha; FLJ21663; ATF6; DKFZp686P2194

Biology Area: ChIP antibodies, Leucine Zipper

Research Background

ATF6 is a transcription factor that acts during endoplasmic reticulum stress by activating unfolded protein response target genes. It binds DNA on the 5'-CCAC[GA]-3' half of the ER stress response element (ERSE) (5'-CCAAT-N(9)-CCAC[GA]-3') and of ERSE II (5'-ATTGG-N-CCACG-3'). Binding to ERSE requires binding of NF-Y to ERSE. ATF6 could also be involved in activation of transcription by the serum response factor. ATF6 exists as a homodimer and heterodimer with ATF6 beta. The dimer interacts with the nuclear transcription factor Y (NF-Y) trimer through direct binding to NF-Y subunit C (NF-YC). It also interacts with the transcription factors GTF2I, YY1 and SRF. Under ER stress the cleaved N-

A DRUG SCREENING EXPERT

terminal cytoplasmic domain translocates into the nucleus. The basic domain of ATF6 functions as a nuclear localization signal and the basic leucine zipper domain is sufficient for association with the NF-Y trimer and binding to ERSE. During the unfolded protein response an approximately 50 kDa fragment containing the cytoplasmic transcription factor domain is released by proteolysis. The cleavage seems to be performed sequentially by site 1 and site 2 proteases. ATF6 is N glycosylated, phosphorylated in vitro by MAPK14/P38MAPK and belongs to the bZIP family.

Inhibitor · Natural Compounds · Compound Libraries · Recombinant Proteins

This product is for Research Use Only · Not for Human or Veterinary or Therapeutic Use

Tel:781-999-4286 E_mail:info@targetmol.com Address:34 Washington Street,Wellesley Hills,MA 02481