

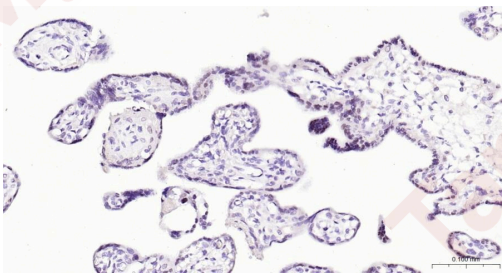
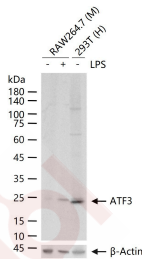
Anti-ATF-3 Polyclonal Antibody

Product Details

Ig Type:	IgG
Reactivity:	Human,Mouse
Molecular Weight:	Theoretical: 20 kDa. Actual: 24 kDa.
Purification:	Protein A purified

Applications

- Verified Activity:
- RAW264.7 (M) cells were treated with or without LPS (1 µg/ml) for 2 h, 25 µg total protein per Lane of cell lysates probed with ATF3 polyclonal antibody, unconjugated (TMAB-00158) at 1:1000 dilution and 4°C overnight incubation. Followed by conjugated secondary antibody incubation at RT for 60 min.
 - Paraformaldehyde-fixed, paraffin embedded Human Placenta; Antigen retrieval by boiling in sodium citrate buffer (pH6.0) for 15 min; The section was incubated with ATF3 Polyclonal Antibody, Unconjugated (TMAB-00158) at 1:200 overnight at 4°C, followed by conjugation to the secondary antibody and DAB staining.



Application:	IF,IHC-Fr,IHC-P,WB
Recommended	WB: 1:500-2000; IHC-P: 1:100-500; IHC-Fr: 1:100-500; IF: 1:100-500

Properties

- Stability & Storage: Store at -20°C or -80°C for 12 months. Avoid repeated freeze-thaw cycles.
- Shipping: Shipping with blue ice.

Antigen Details

Immunogen:	KLH conjugated synthetic peptide: human ATF3
Antigen Species:	Human
Gene ID:	467
Uniprot ID:	P18847
Synonyms:	ATF3;Activating transcription factor 3;cAMP-dependent transcription factor ATF-3;Cyclic AMP-dependent transcription factor ATF-3
Biology Area:	Other factors,ChIP antibodies,Tumor biomarkers

Research Background

This gene encodes a member of the mammalian activation transcription factor/cAMP responsive element-binding (CREB) protein family of transcription factors. This gene is induced by a variety of signals, including many of those encountered by cancer cells, and is involved in the complex process of cellular stress response. Multiple transcript variants encoding different isoforms have been found for this gene. It is possible that alternative splicing of this gene may be physiologically important in the regulation of target genes. [provided by RefSeq, Apr 2011].

Inhibitor · Natural Compounds · Compound Libraries · Recombinant Proteins

This product is for Research Use Only· Not for Human or Veterinary or Therapeutic Use

Tel:781-999-4286 E_mail:info@targetmol.com Address:34 Washington Street,Wellesley Hills,MA 02481