

Anti-ATAD2 Polyclonal Antibody

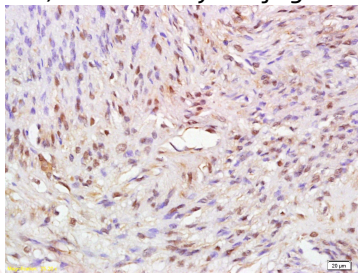
Product Details

Ig Type:	IgG
Reactivity:	Human (predicted:Mouse,Rat,Dog,Pig,Horse,Rabbit,Sheep)
Molecular Weight:	Theoretical: 158 kDa.
Purification:	Protein A purified

Applications

Verified Activity:

Tissue/cell: human cervical carcinoma; 4% Paraformaldehyde-fixed and paraffin-embedded; Antigen retrieval: citrate buffer (0.01M, pH6.0), Boiling bathing for 15 min; Block endogenous peroxidase by 3% Hydrogen peroxide for 30 min; Blocking buffer (normal goat serum) at 37°C for 20 min; Incubation: Anti-ATAD2 Polyclonal Antibody, Unconjugated (TMAB-00157) 1:200, overnight at 4°C, followed by conjugation to the secondary antibody and DAb staining.



Application:	IF,IHC-Fr,IHC-P
Recommended	IF=1:100-500; IHC-Fr=1:100-500; IHC-P=1:100-500

Properties

Stability & Storage:	Store at -20°C or -80°C for 12 months. Avoid repeated freeze-thaw cycles.
Shipping:	Shipping with blue ice.

Antigen Details

Immunogen:	KLH conjugated synthetic peptide: human ATAD2
Antigen Species:	Human
Gene ID:	29028
Uniprot ID:	Q6PL18
Synonyms:	ATPase family AAA domain containing 2;AAA nuclear coregulator cancer-associated protein; ANCCA;ATAD2;ATPase family AAA domain containing protein 2
Biology Area:	Estrogen,Bromodomains,Bromodomain containing,ATPases,Other Chaperones

Research Background

May be a transcriptional coactivator of the nuclear receptor ESR1 required to induce the expression of a subset of estradiol target genes, such as CCND1, MYC and E2F1. May play a role in the recruitment or occupancy of CREBBP at some ESR1 target gene promoters. May be required for histone hyperacetylation. Involved in the estrogen-induced

cell proliferation and cell cycle progression of breast cancer cells.

Inhibitor · Natural Compounds · Compound Libraries · Recombinant Proteins

This product is for Research Use Only · Not for Human or Veterinary or Therapeutic Use

Tel:781-999-4286 E_mail:info@targetmol.com Address:34 Washington Street,Wellesley Hills,MA 02481