

Anti-ASCL1 Polyclonal Antibody

Product Details

Ig Type:	IgG
Reactivity:	Human, Mouse, Rat (predicted: Cow, Sheep)
Molecular Weight:	Theoretical: 26 kDa. Actual: 26 kDa.
Purification:	Protein A purified

Applications

1. Tissue/cell: human glioma tissue; 4% Paraformaldehyde-fixed and paraffin-embedded; Antigen retrieval: citrate buffer (0.01M, pH6.0), Boiling bathing for 15 min; Block endogenous peroxidase by 3% Hydrogen peroxide for 30 min; Blocking buffer (normal goat serum) at 37°C for 20 min; Incubation: Anti-MASH1 Polyclonal Antibody, Unconjugated (TMAB-00150) 1:200, overnight at 4°C, followed by conjugation to the secondary antibody and DAb staining.
2. Tissue/cell: rat brain tissue; 4% Paraformaldehyde-fixed and paraffin-embedded; Antigen retrieval: citrate buffer (0.01M, pH6.0), Boiling bathing for 15 min; Block endogenous peroxidase by 3% Hydrogen peroxide for 30 min; Blocking buffer (normal goat serum) at 37°C for 20 min; Incubation: Anti-MASH1 Polyclonal Antibody, Unconjugated (TMAB-00150) 1:200, overnight at 4°C, followed by conjugation to the secondary antibody and DAb staining.
3. Tissue/cell: mouse embryos tissue; 4% Paraformaldehyde-fixed and paraffin-embedded; Antigen retrieval: citrate buffer (0.01M, pH6.0), Boiling bathing for 15 min; Block endogenous peroxidase by 3% Hydrogen peroxide for 30 min; Blocking buffer (normal goat serum) at 37°C for 20 min; Incubation: Anti-MASH1 Polyclonal Antibody, Unconjugated (TMAB-00150) 1:200, overnight at 4°C, followed by conjugation to the secondary antibody and DAb staining.
4. Tissue/cell: Rat brain tissue; 4% Paraformaldehyde-fixed and paraffin-embedded; Antigen retrieval: citrate buffer (0.01M, pH6.0), Boiling bathing for 15 min; Block endogenous peroxidase by 3% Hydrogen peroxide for 30 min; Blocking buffer (normal goat serum) at 37°C for 20 min; Incubation: Anti-MASH1 Polyclonal Antibody, Unconjugated (TMAB-00150) 1:200, overnight at 4°C, followed by conjugation to the secondary antibody and DAb staining.
5. Blank control: Mouse brain.
Primary Antibody (green line): Rabbit Anti-MASH1 antibody (TMAB-00150)
Dilution: 2 µg/10⁶ cells;
Isotype Control Antibody (orange line): Rabbit IgG.
Secondary Antibody: Goat anti-rabbit IgG-AF647
Dilution: 1 µg/test.
Protocol
The cells were fixed with 4% PFA (10 min at room temperature) and then permeabilized with 90% ice-cold methanol for 20 min at -20°C. The cells were then incubated in 5% BSA to block non-specific protein-protein interactions for 30 min at room temperature. Cells stained with Primary Antibody for 30 min at room temperature. The secondary antibody used for 40 min at room temperature.
6. Blank control: A549. Primary Antibody (green line): Rabbit Anti-MASH1 antibody (TMAB-00150)

Verified Activity:

Dilution: 2 µg/Test;

Secondary Antibody: Goat anti-rabbit IgG-FITC

Dilution: 0.5 µg/Test.

Protocol

The cells were fixed with 4% PFA (10 min at room temperature) and then permeabilized with 90% ice-cold methanol for 20 min at -20°C. The cells were then incubated in 5% BSA to block non-specific protein-protein interactions for 30 min at room temperature. Cells stained with Primary Antibody for 30 min at room temperature. The secondary antibody used for 40 min at room temperature.

7. A549 cell; 4% Paraformaldehyde-fixed; Triton X-100 at room temperature for 20 min; Blocking buffer (normal goat serum) at 37°C for 20 min; Antibody incubation with (MASH1) polyclonal Antibody, Unconjugated (TMAB-00150) 1:100, 90 minutes at 37°C; followed by a conjugated Goat Anti-Rabbit IgG antibody at 37°C for 90 minutes, DAPI (blue) was used to stain the cell nucleus.

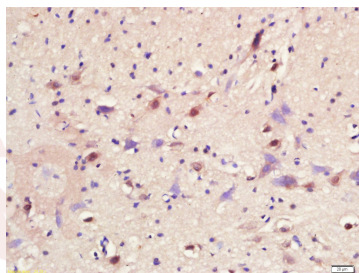
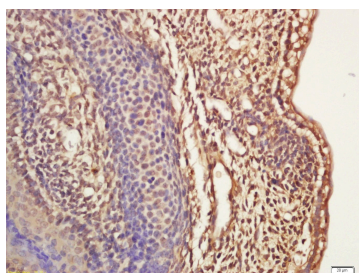
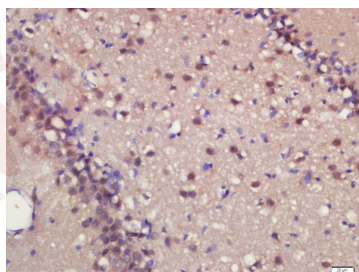
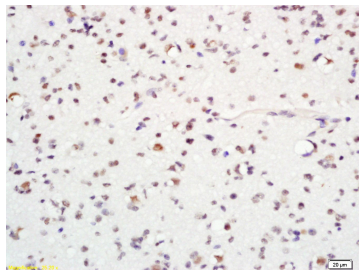
8. Sample: Brain (Mouse) Lysate at 40 µg

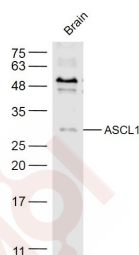
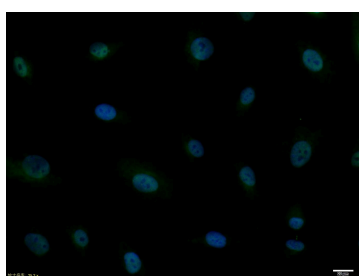
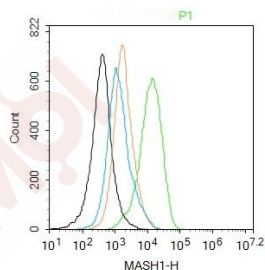
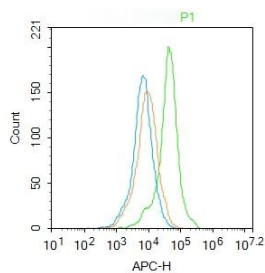
Primary: Anti-ASCL1 (TMAB-00150) at 1/300 dilution

Secondary: IRDye800CW Goat Anti-Rabbit IgG at 1/20000 dilution

Predicted band size: 26 kDa

Observed band size: 26 kDa





Application: FCM, ICC/IF, IHC-Fr, IHC-P, WB

Recommended: FCM=2 µg/Test; ICC/IF=1:100-500; IF=1:100-500; IHC-Fr=1:100-500; IHC-P=1:100-500; WB=1:500-2000

Properties

Stability & Storage: Store at -20°C or -80°C for 12 months. Avoid repeated freeze-thaw cycles.

Shipping: Shipping with blue ice.

Antigen Details

Immunogen: KLH conjugated synthetic peptide: human ASCL1

Antigen Species: Human

Gene ID: 429

Uniprot ID: P50553

Synonyms: HASH1; Class A basic helix-loop-helix protein 46 (bHLHa46); bHLHa46; ASH-1; ASH1; Achaete-scute homolog 1; ASCL1

Biology Area: HLH, Neurogenesis

Research Background

This gene encodes a member of the basic helix-loop-helix (BHLH) family of transcription factors. The protein activates transcription by binding to the E box (5'-CANNTG-3'). Dimerization with other BHLH proteins is required for efficient DNA binding. This protein plays a role in the neuronal commitment and differentiation and in the generation of olfactory and autonomic neurons. Mutations in this gene may contribute to the congenital central hypoventilation syndrome (CCHS) phenotype in rare cases. [provided by RefSeq, Jul 2008]

Inhibitor · Natural Compounds · Compound Libraries · Recombinant Proteins

This product is for Research Use Only · Not for Human or Veterinary or Therapeutic Use

Tel:781-999-4286 E_mail:info@targetmol.com Address:34 Washington Street,Wellesley Hills,MA 02481