

Anti-Apolipoprotein E/APOE4 Polyclonal Antibody

Product Details

Ig Type: IgG
Reactivity: Mouse (predicted:Human,Rat)
Molecular Weight: Theoretical: 34 kDa. Actual: 32 kDa.
Purification: Protein A purified

Applications

1. Paraformaldehyde-fixed, paraffin embedded (Mouse brain); Antigen retrieval by boiling in sodium citrate buffer (pH6.0) for 15 min; Block endogenous peroxidase by 3% hydrogen peroxide for 20 min; Blocking buffer (normal goat serum) at 37°C for 30 min; Antibody incubation with (Apolipoprotein E4) Polyclonal Antibody, Unconjugated (TMAB-00134) at 1:400 overnight at 4°C, followed by operating according to SP Kit (Rabbit) instructions and DAB staining.

Verified Activity:

2. Sample:

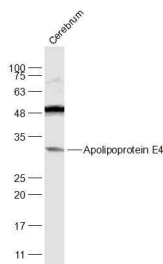
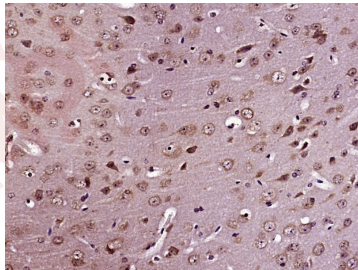
Cerebrum (Mouse) Lysate at 40 µg

Primary: Anti-Apolipoprotein E4 (TMAB-00134) at 1/1000 dilution

Secondary: IRDye800CW Goat Anti-Rabbit IgG at 1/20000 dilution

Predicted band size: 34 kDa

Observed band size: 32 kDa



Application: IF,IHC-Fr,IHC-P,WB

Recommended WB: 1:500-2000; IHC-P: 1:100-500; IHC-Fr: 1:100-500; IF: 1:100-500

Properties

Stability & Storage: Store at -20°C or -80°C for 12 months. Avoid repeated freeze-thaw cycles.

Shipping: Shipping with blue ice.

Antigen Details

Immunogen: KLH conjugated synthetic peptide: human APOE4

Antigen Species: Human

Gene ID: 348

Uniprot ID: P02649

Synonyms: APOE;APOE4;Apolipoprotein E;Apo-E;apolipo E

Biology Area: Metabolism of lipids and lipoproteins,Lipid transport,Cholesterol Metabolism, Lipoproteins/Apolipoproteins,Endoderm,Cholesterol Metabolism,Lipid metabolism,Heart disease,Neurodegenerative disease,Alzheimer's disease,Neurodegenerative disease,Lipid metabolism,Endoderm

Research Background

Apolipoprotein E, a main apoprotein of the chylomicron, binds to a specific receptor on liver cells and peripheral cells and is essential for the normal catabolism of triglyceride-rich lipoprotein constituents. ApoE exists in three major isoforms; E2, E3, and E4, which differ from one another by a single amino-acid substitution. Compared with E3 and E4, E2 exhibits the lowest receptor binding affinity. Defects in ApoE are a cause of hyperlipoproteinemia type III due to increased plasma cholesterol and triglycerides levels which are the consequence of impaired clearance of chylomicron and VLDL remnants.

Inhibitor · Natural Compounds · Compound Libraries · Recombinant Proteins

This product is for Research Use Only · Not for Human or Veterinary or Therapeutic Use

Tel:781-999-4286 E_mail:info@targetmol.com Address:34 Washington Street,Wellesley Hills,MA 02481