

Anti-APLN Polyclonal Antibody

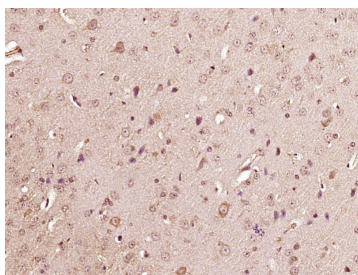
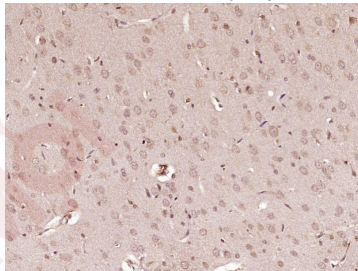
Product Details

Ig Type:	IgG
Reactivity:	Mouse,Rat (predicted:Human)
Molecular Weight:	Theoretical: 10 kDa.
Purification:	Protein A purified

Applications

Verified Activity:

1. Paraformaldehyde-fixed, paraffin embedded (Rat brain); Antigen retrieval by boiling in sodium citrate buffer (pH6.0) for 15 min; Block endogenous peroxidase by 3% hydrogen peroxide for 20 min; Blocking buffer (normal goat serum) at 37°C for 30 min; Antibody incubation with (Apelin) Polyclonal Antibody, Unconjugated (TMAB-00129) at 1:400 overnight at 4°C, followed by operating according to SP Kit (Rabbit) instructions and DAB staining.
2. Paraformaldehyde-fixed, paraffin embedded (Mouse brain); Antigen retrieval by boiling in sodium citrate buffer (pH6.0) for 15 min; Block endogenous peroxidase by 3% hydrogen peroxide for 20 min; Blocking buffer (normal goat serum) at 37°C for 30 min; Antibody incubation with (Apelin) Polyclonal Antibody, Unconjugated (TMAB-00129) at 1:400 overnight at 4°C, followed by operating according to SP Kit (Rabbit) instructions and DAB staining.



Application:	IF,IHC-Fr,IHC-P
Recommended	IHC-P: 1:100-500; IHC-Fr: 1:100-500; IF: 1:100-500

Properties

Stability & Storage:	Store at -20°C or -80°C for 12 months. Avoid repeated freeze-thaw cycles.
Shipping:	Shipping with blue ice.

Antigen Details

Immunogen: KLH conjugated synthetic peptide: human Apelin
Antigen Species: Human
Gene ID: 8862
Uniprot ID: Q9ULZ1
Synonyms: APJ endogenous ligand;APEL;Apelin
Biology Area: Blood Pressure regulation,Inotropics,Obesity,More Neuropeptides,GPCR

Research Background

Apelin (also known as APLN) is a peptide that in humans is encoded by the APLN gene. Apelin is the endogenous ligand for the G-protein-coupled APJ receptor that is expressed at the surface of some cell types. It is widely expressed in various organs such as the heart, lung, kidney, liver, adipose tissue, gastrointestinal tract, brain, adrenal glands, endothelium, and human plasma.

Inhibitor · Natural Compounds · Compound Libraries · Recombinant Proteins

This product is for Research Use Only · Not for Human or Veterinary or Therapeutic Use

Tel:781-999-4286 E_mail:info@targetmol.com Address:34 Washington Street,Wellesley Hills,MA 02481