

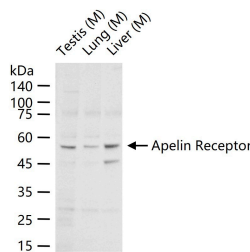
Anti-Apelin Receptor Polyclonal Antibody

Product Details

Ig Type:	IgG
Reactivity:	Mouse (predicted:Human,Rat,Dog,Rabbit,Chicken,Horse)
Molecular Weight:	Theoretical: 42 kDa. Actual: 52 kDa.
Purification:	Protein A purified

Applications

Verified Activity: 25 µg total protein per Lane of various lysates probed with Apelin Receptor polyclonal antibody, unconjugated (TMAB-00128) at 1:1000 dilution and 4°C overnight incubation. Followed by conjugated secondary antibody incubation at RT for 60 min.



Application:	WB
Recommended	WB: 1:500-2000

Properties

Stability & Storage:	Store at -20°C or -80°C for 12 months. Avoid repeated freeze-thaw cycles.
Shipping:	Shipping with blue ice.

Antigen Details

Immunogen:	KLH conjugated synthetic peptide: human Apelin receptor
Antigen Species:	Human
Gene ID:	187
Uniprot ID:	P35414
Synonyms:	AGTRL 1;APJ receptor;FLJ96609;AGTR L1;FLJ90771;Angiotensin II receptor like 1;AGTRL1; Angiotensin receptor like 1;HG11;MGC45246;MSR;HG 11;B78;GPCR34;APJ;Apelin receptor; Aplr;G protein coupled receptor APJ;msr/apj

Research Background

This gene encodes a member of the G protein-coupled receptor gene family. The encoded protein is related to the angiotensin receptor, but is actually an apelin receptor that inhibits adenylate cyclase activity and plays a counter-regulatory role against the pressure action of angiotensin II by exerting hypertensive effect. It functions in the cardiovascular and central nervous systems, in glucose metabolism, in embryonic and tumor angiogenesis and as a human immunodeficiency virus (HIV-1) coreceptor. Two transcript variants resulting from alternative splicing have been identified. [provided by RefSeq]

Inhibitor · Natural Compounds · Compound Libraries · Recombinant Proteins

This product is for Research Use Only · Not for Human or Veterinary or Therapeutic Use

Tel:781-999-4286 E_mail:info@targetmol.com Address:34 Washington Street,Wellesley Hills,MA 02481