

## Anti-APCDD1 Polyclonal Antibody

### Product Details

Ig Type:	IgG
Reactivity:	Human (predicted:Mouse,Rat,Chicken,Dog,Rabbit)
Molecular Weight:	Theoretical: 56 kDa. Actual: 56 kDa.
Purification:	Protein A purified

### Applications

1. Formalin-fixed and paraffin embedded human stomach labeled with Rabbit Anti-APCDD1 Polyclonal Antibody (TMAB-00127) at 1:250 room temperature overnight followed by conjugation to secondary antibody.

2. Sample: DU145 Cell (Human) Lysate at 40 µg

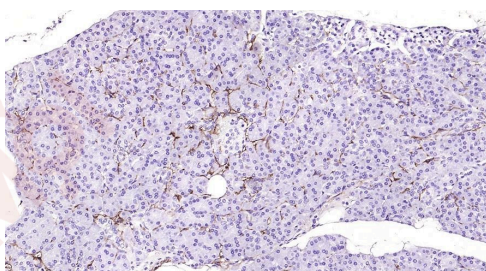
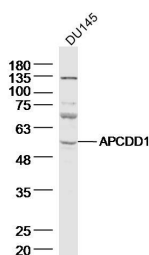
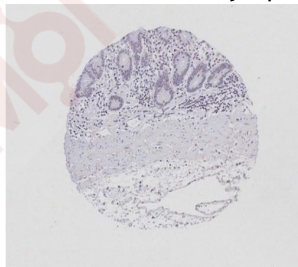
Primary: Anti-APCDD1 (TMAB-00127) at 1/300 dilution

Secondary: IRDye800CW Goat Anti-Rabbit IgG at 1/20000 dilution

Verified Activity: Predicted band size: 56 kDa

Observed band size: 56 kDa

3. Paraformaldehyde-fixed, paraffin embedded (Human pancreas); Antigen retrieval by boiling in sodium citrate buffer (pH6.0) for 15 min; Block endogenous peroxidase by 3% hydrogen peroxide for 20 min; Blocking buffer (normal goat serum) at 37°C for 30 min; Antibody incubation with (APCDD1) Polyclonal Antibody, Unconjugated (TMAB-00127) at 1:200 overnight at 4°C, followed by operating according to SP Kit (Rabbit) instructions and DAB staining.



Application: IF,IHC-Fr,IHC-P,WB

## A DRUG SCREENING EXPERT

---

Recommended WB: 1:500-2000; IHC-P: 1:100-500; IHC-Fr: 1:100-500; IF: 1:100-500

---

### Properties

Stability & Storage: Store at -20°C or -80°C for 12 months. Avoid repeated freeze-thaw cycles.

Shipping: Shipping with blue ice.

---

### Antigen Details

Immunogen: KLH conjugated synthetic peptide: human APCDD1

Antigen Species: Human

Gene ID: 147495

Uniprot ID: Q8J025

Synonyms: HTS;Apccd1;HHS;HYPT1;Drapc1;FP7019;B7323

Biology Area: Signal transduction, Surface Molecules

---

### Research Background

APCDD1 is a novel protein that has been shown to be a target of Wnt/beta catenin signaling pathway in cancer cell lines. APCDD1 is overexpressed in colorectal carcinogenesis and is deregulated in CTNNB1 mutated Wilms tumors. [FUNCTION] Probably plays a role in colorectal tumorigenesis. May be a developmental target gene of the Wnt/Beta-catenin pathway.

[SUBCELLULAR LOCATION] Membrane; Single-pass type I membrane protein (Potential).

[TISSUE SPECIFICITY] Abundantly expressed in heart, pancreas, prostate and ovary. Moderately expressed in lung, liver, kidney, spleen, thymus, colon and peripheral lymphocytes.

[INDUCTION] Transcriptionally regulated by the CTNNB1/TF7L2 complex.

**Inhibitor · Natural Compounds · Compound Libraries · Recombinant Proteins**

This product is for Research Use Only · Not for Human or Veterinary or Therapeutic Use

Tel: 781-999-4286 E\_mail: info@targetmol.com Address: 34 Washington Street, Wellesley Hills, MA 02481