

Anti-ANXA1 Polyclonal Antibody

Product Details

Ig Type:	IgG
Reactivity:	Human,Rat (predicted:Mouse,Pig,Cow,Horse,Rabbit)
Molecular Weight:	Theoretical: 39 kDa. Actual: 40 kDa.
Purification:	Protein A purified

Applications

1. A549 cell; 4% Paraformaldehyde-fixed; Triton X-100 at room temperature for 20 min; Blocking buffer (normal goat serum) at 37°C for 20 min; Antibody incubation with (Annexin A1) polyclonal Antibody, Unconjugated (TMAB-00125) 1:100, 90 minutes at 37°C; followed by a conjugated Goat Anti-Rabbit IgG antibody at 37°C for 90 minutes, DAPI (blue) was used to stain the cell nucleus.

2. Tissue/cell: human cervical carcinoma; 4% Paraformaldehyde-fixed and paraffin-embedded;

Antigen retrieval: citrate buffer (0.01M, pH6.0), Boiling bathing for 15 min; Block endogenous peroxidase by 3% Hydrogen peroxide for 30 min; Blocking buffer (normal goat serum) at 37°C for 20 min;

Incubation: Anti-Annexin A1 Polyclonal Antibody, Unconjugated (TMAB-00125) 1:200, overnight at 4°C, followed by conjugation to the secondary antibody and DAb staining.

3. Sample:

Lane1: Kidney (Rat) Lysate at 30 µg

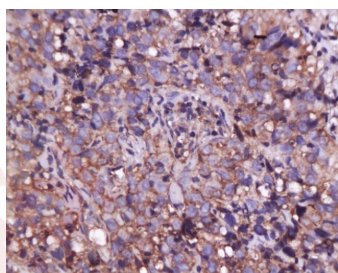
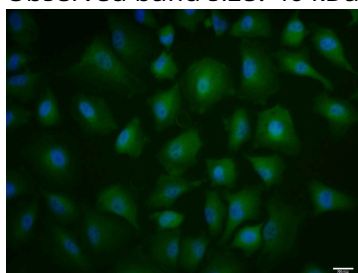
Lane2: Brain (Rat) Lysate at 30 µg

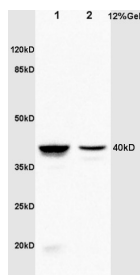
Primary: Anti-Annexin A1 (TMAB-00125) at 1:200 dilution;

Secondary: HRP conjugated Goat Anti-Rabbit Igg (secondary antibody) at 1: 3000 dilution;

Predicted band size: 39 kDa

Observed band size: 40 kDa





Application: ICC/IF,IF,IHC-Fr,IHC-P,WB

Recommended ICC/IF=1:100-500; IF=1:100-500; IHC-Fr=1:100-500; IHC-P=1:100-500; WB=1:500-2000

Properties

Stability & Storage: Store at -20°C or -80°C for 12 months. Avoid repeated freeze-thaw cycles.

Shipping: Shipping with blue ice.

Antigen Details

Immunogen: KLH conjugated synthetic peptide: human Annexin A1

Antigen Species: Human

Gene ID: 301

Uniprot ID: P04083

Synonyms: Annexin-1;Chromobindin-9;p35;ANXA1;ANX1;LPC1;Annexin I;Annexin A1;Calpactin II;Lipocortin I;Calpactin-2

Biology Area: Annexins,Calcium Signaling,Lipid Signaling

Research Background

This gene encodes a protein that belongs to a family of Ca(2+) dependent phospholipid binding proteins which have a molecular weight of approximately 35,000 to 40,000 and are preferentially located on the cytosolic face of the plasma membrane. Annexin I protein has an apparent relative molecular mass of 40 kDa, with phospholipase A2 inhibitory activity. Since phospholipase A2 is required for the biosynthesis of the potent mediators of inflammation, prostaglandins and leukotrienes, annexin I may have potential anti inflammatory activity.

Inhibitor · Natural Compounds · Compound Libraries · Recombinant Proteins

This product is for Research Use Only · Not for Human or Veterinary or Therapeutic Use

Tel:781-999-4286 E_mail:info@targetmol.com Address:34 Washington Street,Wellesley Hills,MA 02481