

## Anti-Angiotensin II Polyclonal Antibody

### Product Details

Ig Type:	IgG
Reactivity:	Human,Mouse,Rat
Molecular Weight:	Theoretical: 53 kDa. Actual: 50 kDa.
Purification:	Protein A purified

### Applications

#### 1. Sample:

- Lane 1: Liver (Mouse) Lysate at 40 µg
- Lane 2: Cerebrum (Mouse) Lysate at 40 µg
- Lane 3: Kidney (Mouse) Lysate at 40 µg
- Lane 4: Adrenal gland (Mouse) Lysate at 40 µg
- Lane 5: Cerebrum (Rat) Lysate at 40 µg
- Lane 6: Adrenal gland (Rat) Lysate at 40 µg

Primary: Anti-Angiotensinogen (TMAB-00119) at 1/1000 dilution

Secondary: IRDye800CW Goat Anti-Rabbit IgG at 1/20000 dilution

Predicted band size: 50-55 kDa

Observed band size: 50 kDa

2. Blank control: HepG2. Primary Antibody (green line): Rabbit Anti-Angiotensinogen II antibody (TMAB-00119)

Verified Activity: Dilution: 1 µg/10<sup>6</sup> cells;

Isotype Control Antibody (orange line): Rabbit IgG.

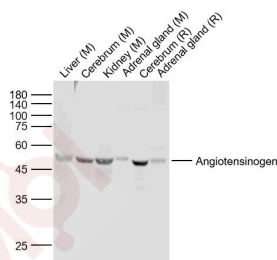
Secondary Antibody: Goat anti-rabbit IgG-AF647

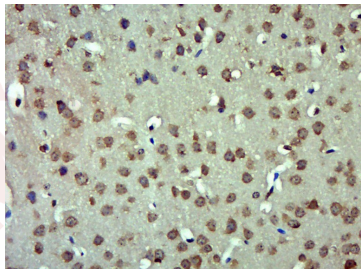
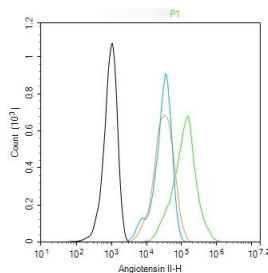
Dilution: 1 µg/test.

#### Protocol

The cells were fixed with 4% PFA (10 min at room temperature) and then permeabilized with 0.1% PBST for 20 min at room temperature. The cells were then incubated in 5% BSA to block non-specific protein-protein interactions for 30 min at room temperature. Cells stained with Primary Antibody for 30 min at room temperature. The secondary antibody used for 40 min at room temperature.

3. Paraformaldehyde-fixed, paraffin embedded Mouse Cerebrum; Antigen retrieval by boiling in sodium citrate buffer (pH6.0) for 15 min; Antibody incubation with Angiotensin II Polyclonal Antibody, Unconjugated (TMAB-00119) at 1:400 overnight at 4°C, followed by conjugation to the SP Kit (Rabbit) and DAB staining.





Application: FCM,IF,IHC-Fr,IHC-P,WB

Recommended WB: 1:500-2000; IHC-P: 1:100-500; IHC-Fr: 1:100-500; IF: 1:100-500; FCM: 1ug/Test

### Properties

Stability & Storage: Store at -20°C or -80°C for 12 months. Avoid repeated freeze-thaw cycles.

Shipping: Shipping with blue ice.

### Antigen Details

Immunogen: (DRVYIHPF-GG)8K4K2KG

Synonyms: alpha 1 antiproteinase, antitrypsin;Angiotensin II;AT-II;Angiotensin I;Angiotensinogen(serpin peptidase inhibitor, clade A member 8);SERPINA8;Angiotensinogen;Pre angiotensinogen; Serine(or cysteine) proteinase inhibitor;Serpine A8;ANG III;Angiotensin III;Ang II;ANHU;ANGT;AT-2

Biology Area: Response to hypoxia,Serum Proteins,Hypoxia

### Research Background

Angiotensin II human (Ang II) is a biologically active peptide, a vasoconstrictor. Angiotensin II interacts with AT1R and AT2R to regulate blood pressure, stimulate sympathetic nerves, and increase aldosterone biosynthesis and renal activity in humans.

**Inhibitor · Natural Compounds · Compound Libraries · Recombinant Proteins**

This product is for Research Use Only · Not for Human or Veterinary or Therapeutic Use

Tel:781-999-4286 E\_mail:info@targetmol.com Address:34 Washington Street,Wellesley Hills,MA 02481