

Anti-AMPK alpha 1 Antibody (4D648)

Product Details

Ig Type:	IgG1
Reactivity:	Human,Mouse,Rat
Molecular Weight:	Theoretical: 64 kDa. Actual: 64 kDa.
Clone:	4D648
Purification:	Protein G purified

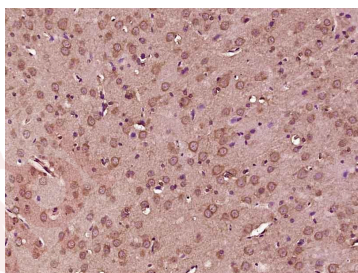
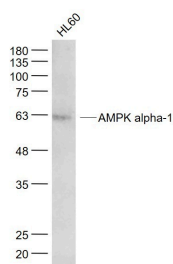
Applications

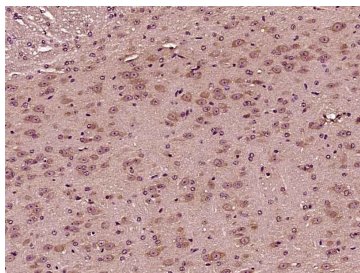
1. Sample:
HL60 (Human) Cell Lysate at 30 µg
Primary: Anti-AMPK alpha-1 (TMAB-00113) at 1/1000 dilution
Secondary: IRDye800CW Goat Anti-Mouse IgG at 1/20000 dilution
Predicted band size: 64 kDa
Observed band size: 64 kDa

Verified Activity:

2. Paraformaldehyde-fixed, paraffin embedded (Rat brain); Antigen retrieval by boiling in sodium citrate buffer (pH6.0) for 15 min; Block endogenous peroxidase by 3% hydrogen peroxide for 20 min; Blocking buffer (normal goat serum) at 37°C for 30 min; Antibody incubation with (AMPK alpha-1) Monoclonal Antibody, Unconjugated (TMAB-00113) at 1:400 overnight at 4°C, followed by operating according to SP Kit (Mouse) instructions and DAB staining.

3. Paraformaldehyde-fixed, paraffin embedded (Mouse brain); Antigen retrieval by boiling in sodium citrate buffer (pH6.0) for 15 min; Block endogenous peroxidase by 3% hydrogen peroxide for 20 min; Blocking buffer (normal goat serum) at 37°C for 30 min; Antibody incubation with (AMPK alpha-1) Monoclonal Antibody, Unconjugated (TMAB-00113) at 1:400 overnight at 4°C, followed by operating according to SP Kit (Mouse) instructions and DAB staining.





Application: IF,IHC-Fr,IHC-P,WB

Recommended WB: 1:500-1000; IHC-P: 1:200-800; IHC-Fr: 1:200-500; IF: 1:200-500

Properties

Stability & Storage: Store at -20°C or -80°C for 12 months. Avoid repeated freeze-thaw cycles.

Shipping: Shipping with blue ice.

Antigen Details

Immunogen: KLH conjugated synthetic peptide: human AMPK alpha-1

Antigen Species: Human

Gene ID: 5562

Synonyms: SNF1-like protein AMPK;AMPK;5' AMP activated protein kinase catalytic subunit alpha 1;im: 7154392;AMPKa1;AMPK 1;cb1116;EC 2.7.11.1;wu:fa94c10;AMPK α 1;AMP-activate kinase alpha 1 subunit;C130083N04Rik;MGC33776;AMPK-a;AL024255;5 AMP activated protein kinase catalytic alpha 1 chain;AMPK α 1;AMPK a1;PRKAA1;AI450832;5 AMP activated protein kinase alpha 1 catalytic subunit;AMP-activated protein kinase, catalytic, alpha-1;hormone sensitive lipase kinase;AMPKalpha1;MGC57364;AMPK alpha 1 chain;AMPK α 1;AMPK α 1;Protein kinase AMP activated alpha 1 catalytic subunit;AAPK1;AMPK alpha-1;acetyl CoA carboxylase kinase;PRKAA 1;HMG CoA reductase kinase;kinase AMPK alpha1;AMPK1;AI194361

Biology Area: Integration of energy metabolism,Response to hypoxia,Metabolism,Integration of energy,Fatty acids,Hypoxia,Fatty acid oxidation,Cancer,Neurodegenerative disease,Amyloid,Other Kinases

Research Background

The protein encoded by this gene belongs to the ser/thr protein kinase family. It is the catalytic subunit of the 5'-prime-AMP-activated protein kinase (AMPK). AMPK is a cellular energy sensor conserved in all eukaryotic cells. The kinase activity of AMPK is activated by the stimuli that increase the cellular AMP/ATP ratio. AMPK regulates the activities of a number of key metabolic enzymes through phosphorylation. It protects cells from stresses that cause ATP depletion by switching off ATP-consuming biosynthetic pathways. Alternatively spliced transcript variants encoding distinct isoforms have been observed. [provided by RefSeq, Jul 2008]

Inhibitor · Natural Compounds · Compound Libraries · Recombinant Proteins

This product is for Research Use Only · Not for Human or Veterinary or Therapeutic Use

Tel:781-999-4286 E_mail:info@targetmol.com Address:34 Washington Street,Wellesley Hills,MA 02481