

Anti-Amphiregulin Polyclonal Antibody

Product Details

Ig Type:	IgG
Reactivity:	Human,Mouse,Rat (predicted:Dog,Cow,Horse,Rabbit,Sheep)
Molecular Weight:	Theoretical: 16 kDa. Actual: 50 kDa.
Purification:	Protein A purified

Applications

1. Paraformaldehyde-fixed, paraffin embedded (human tonsil); Antigen retrieval by boiling in sodium citrate buffer (pH6.0) for 15 min; Block endogenous peroxidase by 3% hydrogen peroxide for 20 min; Blocking buffer (normal goat serum) at 37°C for 30 min; Antibody incubation with (Amphiregulin) Polyclonal Antibody, Unconjugated (TMAB-00111) at 1:200 overnight at 4°C, followed by operating according to SP Kit (Rabbit) instructions and DAB staining.
2. Paraformaldehyde-fixed, paraffin embedded (human gastric carcinoma); Antigen retrieval by boiling in sodium citrate buffer (pH6.0) for 15 min; Block endogenous peroxidase by 3% hydrogen peroxide for 20 min; Blocking buffer (normal goat serum) at 37°C for 30 min; Antibody incubation with (Amphiregulin) Polyclonal Antibody, Unconjugated (TMAB-00111) at 1:200 overnight at 4°C, followed by operating according to SP Kit (Rabbit) instructions and DAB staining.
3. Paraformaldehyde-fixed, paraffin embedded (human liver carcinoma); Antigen retrieval by boiling in sodium citrate buffer (pH6.0) for 15 min; Block endogenous peroxidase by 3% hydrogen peroxide for 20 min; Blocking buffer (normal goat serum) at 37°C for 30 min; Antibody incubation with (Amphiregulin) Polyclonal Antibody, Unconjugated (TMAB-00111) at 1:200 overnight at 4°C, followed by operating according to SP Kit (Rabbit) instructions and DAB staining.
4. Sample:
HepG2 (Human) Cell Lysate at 30 µg
Primary: Anti-Amphiregulin (TMAB-00111) at 1/2000 dilution
Secondary: IRDye800CW Goat Anti-Rabbit IgG at 1/20000 dilution
Predicted band size: 26 kDa
Observed band size: 41 kDa
5. Sample:
A549 (Human) Cell Lysate at 30 µg
Primary: Anti-Amphiregulin (TMAB-00111) at 1/500 dilution
Secondary: IRDye800CW Goat Anti-Rabbit IgG at 1/20000 dilution
Predicted band size: 26 kDa
Observed band size: 41 kDa
6. Paraformaldehyde-fixed, paraffin embedded (Rat brain); Antigen retrieval by boiling in sodium citrate buffer (pH6.0) for 15 min; Block endogenous peroxidase by 3% hydrogen peroxide for 20 min; Blocking buffer (normal goat serum) at 37°C for 30 min; Antibody incubation with (Amphiregulin) Polyclonal Antibody, Unconjugated (TMAB-00111) at 1:400 overnight at 4°C, followed by operating according to SP Kit (Rabbit) instructions and DAB staining.
7. Tissue/cell: mouse fetal intestine; 4% Paraformaldehyde-fixed and paraffin-embedded; Antigen retrieval: citrate buffer (0.01M, pH6.0), Boiling bathing for 15 min; Blocking buffer

Verified Activity:

(normal goat serum) at 37°C for 20 min;

Incubation: Anti-Amphiregulin Polyclonal Antibody, Unconjugated (TMAB-00111) 1:200, overnight at 4°C; The secondary antibody was Goat Anti-Rabbit IgG, Cy3 conjugated used at 1:200 dilution for 40 minutes at 37°C. DAPI (5 µg/ml, blue) was used to stain the cell nucleus.

8. Tissue/cell: mouse fetal liver; 4% Paraformaldehyde-fixed and paraffin-embedded; Antigen retrieval: citrate buffer (0.01M, pH6.0), Boiling bathing for 15 min; Blocking buffer (normal goat serum) at 37°C for 20 min;

Incubation: Anti-Amphiregulin Polyclonal Antibody, Unconjugated (TMAB-00111) 1:200, overnight at 4°C; The secondary antibody was Goat Anti-Rabbit IgG, Cy3 conjugated used at 1:200 dilution for 40 minutes at 37°C. DAPI (5 µg/ml, blue) was used to stain the cell nucleus.

9. Tissue/cell: mouse embryo tissue; 4% Paraformaldehyde-fixed and paraffin-embedded; Antigen retrieval: citrate buffer (0.01M, pH6.0), Boiling bathing for 15 min; Blocking buffer (normal goat serum) at 37°C for 20 min;

Incubation: Anti-Amphiregulin Polyclonal Antibody, Unconjugated (TMAB-00111) 1:200, overnight at 4°C; The secondary antibody was Goat Anti-Rabbit IgG, Cy3 conjugated used at 1:200 dilution for 40 minutes at 37°C. DAPI (5 µg/ml, blue) was used to stain the cell nucleus.

10. Sample:

Lane 1: Mouse Placenta tissue lysates

Lane 2: Mouse Breast tissue lysates

Lane 3: Mouse Testis tissue lysates

Lane 4: Rat Placenta tissue lysates

Lane 5: Rat Breast tissue lysates

Lane 6: Rat Testis tissue lysates

Lane 7: Human MCF-7 cell lysates

Lane 8: Human HepG2 cell lysates

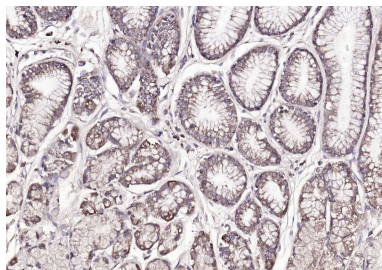
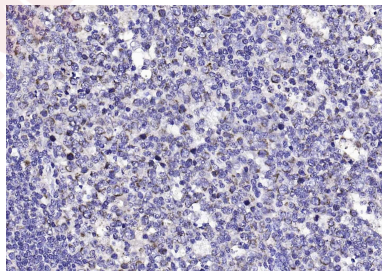
Lane 9: Human A431 cell lysates

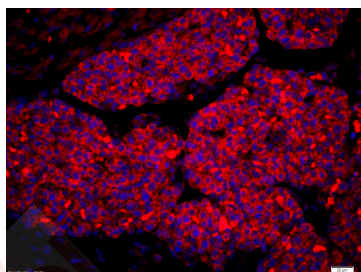
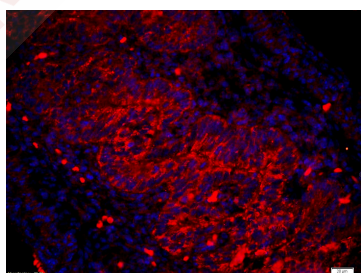
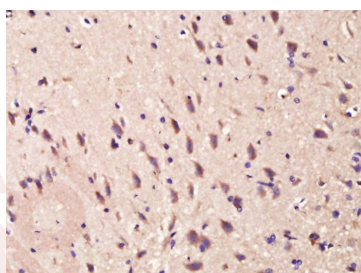
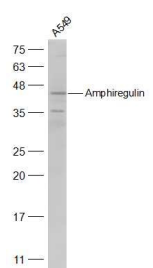
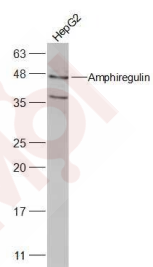
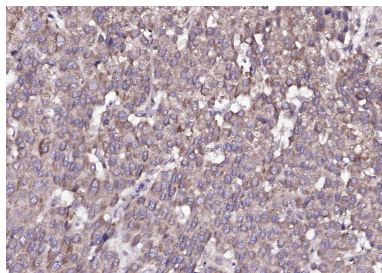
Primary: Anti-Amphiregulin (TMAB-00111) at 1/1000 dilution

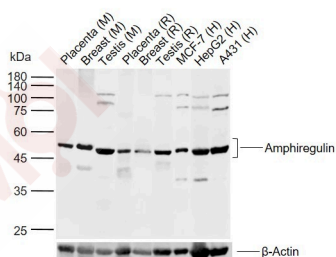
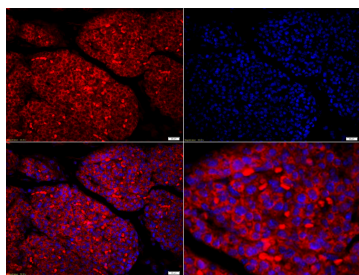
Secondary: IRDye800CW Goat Anti-Rabbit IgG at 1/20000 dilution

Predicted band size: 16 kDa

Observed band size: 47 kDa







Application: IF,IHC-Fr,IHC-P,WB

Recommended WB: 1:500-2000; IHC-P: 1:100-500; IHC-Fr: 1:100-500; IF: 1:100-500

Properties

Stability & Storage: Store at -20°C or -80°C for 12 months. Avoid repeated freeze-thaw cycles.

Shipping: Shipping with blue ice.

Antigen Details

Immunogen: KLH conjugated synthetic peptide: human Amphiregulin

Antigen Species: Human

Gene ID: 374

Uniprot ID: P15514

Synonyms: MGC13647;SDGF;CRDGF;AREGB;AR;Amphiregulin;AREG

Biology Area: EGF,EGF

Research Background

Amphiregulin expression is induced by phorbol ester, estrogen, androgen, and other EGFR ligands. In vitro, amphiregulin functions as an autocrine growth stimulator to drive proliferation of colon carcinoma cells, normal and oncogene-transformed mammary epithelial cells, cervical carcinoma cells, prostate cancer cells, and keratinocytes. Amphiregulin is important in the development of human placenta and murine mammary gland. It is reportedly overexpressed in human cancers of breast, colon, stomach and pancreas.

Inhibitor · Natural Compounds · Compound Libraries · Recombinant Proteins

This product is for Research Use Only· Not for Human or Veterinary or Therapeutic Use

Tel:781-999-4286 E_mail:info@targetmol.com Address:34 Washington Street,Wellesley Hills,MA 02481