

Alpha-Tubulin Loading Control Polyclonal Antibody

Product Details

Ig Type:	IgG
Reactivity:	Human,Mouse,Rat (predicted:Sheep,Cow)
Molecular Weight:	Theoretical: 50 kDa. Actual: 52 kDa.
Purification:	Protein A purified

Applications

1. Blank control: RSC96 Cells (blue). Primary Antibody: Rabbit Anti-Tubulin-alpha 1 antibody (TMAB-00109), Dilution: 1 µg in 100 µL 1X PBS containing 0.5% BSA; Isotype Control Antibody: Rabbit IgG (orange), used under the same conditions); Secondary Antibody: Goat anti-rabbit IgG-Pe (white blue), Dilution: 1:200 in 1 X PBS containing 0.5% BSA.

Protocol

The cells were fixed with 2% paraformaldehyde (10 min), then permeabilized with 90% ice-cold methanol for 30 min on ice. Primary antibody (TMAB-00109, 1 µg/1x10⁶ cells) were incubated for 30 min on the ice, followed by 1 X PBS containing 0.5% BSA + 10% goat serum (15 min) to block non-specific protein-protein interactions. Then the Goat Anti-rabbit IgG/PE antibody was added into the blocking buffer mentioned above to react with the primary antibody at 1/200 dilution for 30 min on ice.

2. Sample:

Lane 1: Mouse NIH/3T3 cell lysates

Lane 2: Human HepG2 cell lysates

Lane 3: Human 293T cell lysates

Primary: Anti-Tubulin-alpha (TMAB-00109) at 1/1000 dilution

Secondary: IRDye800CW Goat Anti-Rabbit IgG at 1/20000 dilution

Predicted band size: 50 kDa

Observed band size: 52 kDa

Verified Activity:

3. Sample:

Lane 1: Human HeLa cell lysates

Lane 2: Human Jurkat cell lysates

Lane 3: Human SH-SY5Y cell lysates

Lane 4: Human U-2 OS cell lysates

Lane 5: Human A431 cell lysates

Primary: Anti-Tubulin-alpha (TMAB-00109) at 1/1000 dilution

Secondary: IRDye800CW Goat Anti-Rabbit IgG at 1/20000 dilution

Predicted band size: 50 kDa

Observed band size: 52 kDa

4. Paraformaldehyde-fixed, paraffin embedded Mouse Colon; Antigen retrieval by boiling in sodium citrate buffer (pH6.0) for 15 min; Antibody incubation with Tubulin-alpha Polyclonal Antibody, Unconjugated (TMAB-00109) at 1:200 overnight at 4°C, followed by conjugation to the secondary antibody and DAB staining.

5. Paraformaldehyde-fixed, paraffin embedded Rat Colon; Antigen retrieval by boiling in sodium citrate buffer (pH6.0) for 15 min; Antibody incubation with Tubulin-alpha Polyclonal Antibody, Unconjugated (TMAB-00109) at 1:200 overnight at 4°C, followed by conjugation to the secondary antibody and DAB staining.

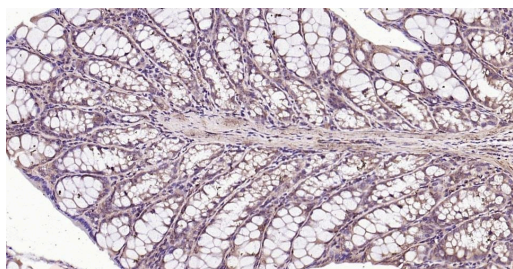
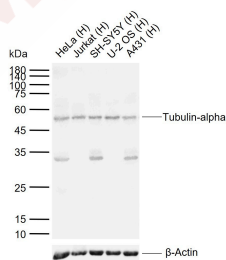
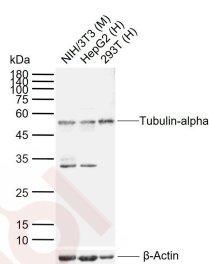
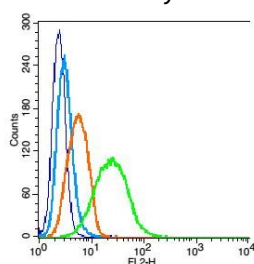
6. Paraformaldehyde-fixed, paraffin embedded Human Colon Cancer; Antigen retrieval by

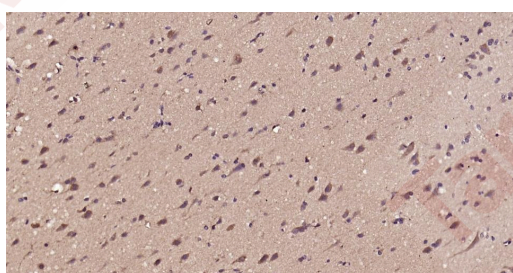
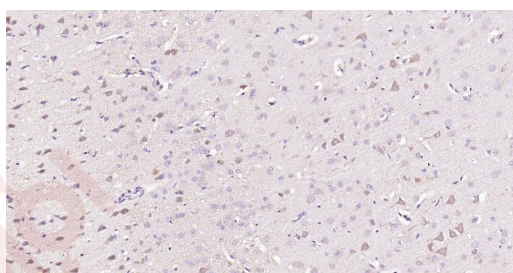
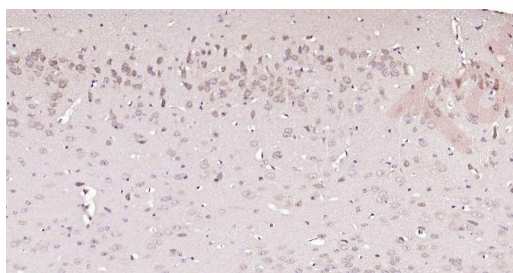
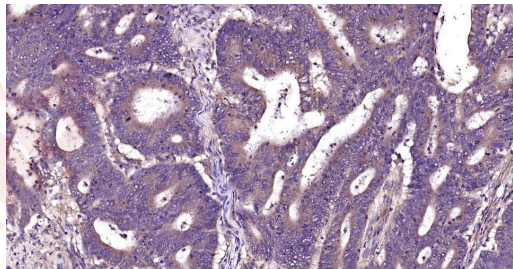
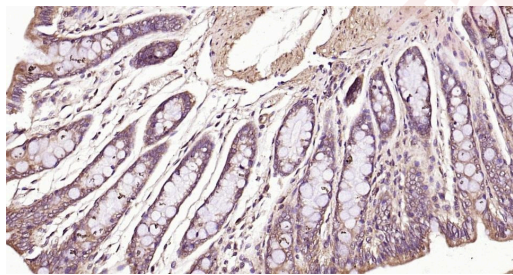
boiling in sodium citrate buffer (pH6.0) for 15 min; Antibody incubation with Tubulin-alpha Polyclonal Antibody, Unconjugated (TMAB-00109) at 1:200 overnight at 4°C, followed by conjugation to the secondary antibody and DAB staining.

7. Paraformaldehyde-fixed, paraffin embedded Mouse Cerebrum; Antigen retrieval by boiling in sodium citrate buffer (pH6.0) for 15 min; Antibody incubation with Tubulin-alpha Polyclonal Antibody, Unconjugated (TMAB-00109) at 1:200 overnight at 4°C, followed by conjugation to the secondary antibody and DAB staining.

8. Paraformaldehyde-fixed, paraffin embedded Rat Cerebrum; Antigen retrieval by boiling in sodium citrate buffer (pH6.0) for 15 min; Antibody incubation with Tubulin-alpha Polyclonal Antibody, Unconjugated (TMAB-00109) at 1:200 overnight at 4°C, followed by conjugation to the secondary antibody and DAB staining.

9. Paraformaldehyde-fixed, paraffin embedded Human Cerebrum; Antigen retrieval by boiling in sodium citrate buffer (pH6.0) for 15 min; Antibody incubation with Tubulin-alpha Polyclonal Antibody, Unconjugated (TMAB-00109) at 1:200 overnight at 4°C, followed by conjugation to the secondary antibody and DAB staining.





Application: FCM,IF,IHC-Fr,IHC-P,WB

Recommended WB: 1:500-2000; IHC-P: 1:100-500; IHC-Fr: 1:100-500; IF: 1:100-500; FCM: 1µg/Test

Properties

Stability & Storage: Store at -20°C or -80°C for 12 months. Avoid repeated freeze-thaw cycles.

Shipping: Shipping with blue ice.

Antigen Details

Immunogen:	KLH conjugated synthetic peptide: human Tubulin-alpha 1
Antigen Species:	Human
Gene ID:	7846
Uniprot ID:	Q71U36
Synonyms:	FLJ30169;TBA4A;Testis-specific alpha-tubulin;Detyrosinated alpha Tubulin;TUBA1;Tubulin alpha 1;Tubulin alpha 1(testis specific);Tuba4a;H2 alpha;Tubulin alpha 4A chain;TUBA 4A;Tubulin H2-alpha;Tubulin alpha 1 chain;alpha-tubulin 1;Tubulin alpha 4a;Tubulin-alpha;α-tubulin
Biology Area:	Tubulin

Research Background

Tubulin is a major cytoskeleton that has five distinct forms, designated alpha, beta, gamma, delta and epsilon tubulin. The alpha and beta tubulins form a heterodimer that polymerize into the cylindrical microtubule fibers. Both alpha and beta tubulin bind GTP. Only beta tubulin hydrolyzes GTP to GDP. This hydrolysis is a process that is linked to tubulin polymerization and microtubule formation. The alpha tubulin isomer can be modified by addition of a C-terminal tyrosine residue. This modification may influence polymerization rates. The gamma tubulin isomer is localized to centrosomes which compose the heart of the microtubule organizing center from which microtubule fibers emanate.

Inhibitor · Natural Compounds · Compound Libraries · Recombinant Proteins

This product is for Research Use Only · Not for Human or Veterinary or Therapeutic Use

Tel:781-999-4286 E_mail:info@targetmol.com Address:34 Washington Street,Wellesley Hills,MA 02481