

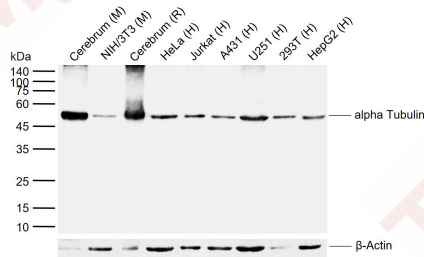
Alpha-Tubulin Loading Control Antibody (8C509)

Product Details

Ig Type:	IgG
Reactivity:	Human,Mouse,Rat (predicted:Chicken,Dog,Pig,Rabbit,Zebrafish,GuineaPig)
Molecular Weight:	Theoretical: 50 kDa. Actual: 50 kDa.
Clone:	8C509
Purification:	Protein G purified

Applications

Sample:	Lane 1: Mouse Cerebrum tissue lysates Lane 2: Mouse NIH/3T3 cell lysates Lane 3: Rat Cerebrum tissue lysates Lane 4: Human HeLa cell lysates Lane 5: Human Jurkat cell lysates Lane 6: Human A431 cell lysates Lane 7: Human U251 cell lysates Lane 8: Human 293T cell lysates Lane 9: Human HepG2 cell lysates
Verified Activity:	Primary: Anti-alpha Tubulin (TMAB-00108) at 1/100000 dilution Secondary: IRDye800CW Goat Anti-Mouse IgG at 1/20000 dilution Predicted band size: 50 kDa Observed band size: 50 kDa



Application:	WB,IHC-P,IHC-F,IF,FCM,ICC/IF
Recommended	WB=1:5000-100000,IHC-P=1:500-1000,IHC-F=1:500-1000,IF=1:500-1000,FCM=1:50-100, ICC/IF=1:50-200

Properties

Stability & Storage:	Store at -20°C or -80°C for 12 months. Avoid repeated freeze-thaw cycles.
Shipping:	Shipping with blue ice.

Antigen Details

Immunogen:	Recombinant Protein: human alpha Tubulin Protein
Antigen Species:	Human
Gene ID:	7846
Uniprot ID:	Q71U36
Synonyms:	Tubulin-alpha;H2 alpha;FLJ30169;Testis-specific alpha-tubulin; α -tubulin;TUBA1;alpha-tubulin 1;TBA4A;Tubulin H2-alpha;Tuba4a;Tubulin alpha 4a;TUBA 4A;Tubulin alpha 1(testis specific);Tubulin alpha 4A chain;Detyrosinated alpha Tubulin;Tubulin alpha 1 chain;Tubulin alpha 1
Biology Area:	Tubulin

Research Background

Tubulin is a major cytoskeleton that has five distinct forms, designated alpha, beta, gamma, delta and epsilon tubulin. The alpha and beta tubulins form a heterodimer that polymerize into the cylindrical microtubule fibers. Both alpha and beta tubulin bind GTP. Only beta tubulin hydrolyzes GTP to GDP. This hydrolysis is a process that is linked to tubulin polymerization and microtubule formation. The alpha tubulin isomer can be modified by addition of a C-terminal tyrosine residue. This modification may influence polymerization rates. The gamma tubulin isomer is localized to centrosomes which compose the heart of the microtubule organizing center from which microtubule fibers emanate.

Inhibitor · Natural Compounds · Compound Libraries · Recombinant Proteins

This product is for Research Use Only · Not for Human or Veterinary or Therapeutic Use

Tel:781-999-4286 E_mail:info@targetmol.com Address:34 Washington Street,Wellesley Hills,MA 02481