

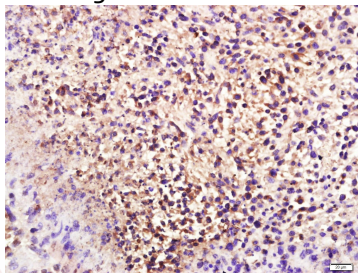
## Anti-Alpha-S2-casein Polyclonal Antibody

### Product Details

Ig Type:	IgG
Reactivity:	Mouse (predicted: Cow, Sheep)
Molecular Weight:	Theoretical: 24 kDa.
Purification:	Protein A purified

### Applications

Verified Activity: Paraformaldehyde-fixed, paraffin embedded (Mouse mammary tumor); Antigen retrieval by boiling in sodium citrate buffer (pH6.0) for 15 min; Block endogenous peroxidase by 3% hydrogen peroxide for 20 min; Blocking buffer (normal goat serum) at 37°C for 30 min; Antibody incubation with (Alpha s2 Casein) Polyclonal Antibody, Unconjugated (TMAB-00106) at 1:400 overnight at 4°C, followed by a conjugated secondary antibody for 20 min and DAB staining.



Application:	IF, IHC-Fr, IHC-P
Recommended	IHC-P: 1:100-500; IHC-Fr: 1:100-500; IF: 1:100-500

### Properties

Stability & Storage:	Store at -20°C or -80°C for 12 months. Avoid repeated freeze-thaw cycles.
Shipping:	Shipping with blue ice.

### Antigen Details

Immunogen:	KLH conjugated synthetic peptide: cow Alpha s2 Casein
Antigen Species:	Cow
Synonyms:	Casocidin-1; CSN1S2; Casocidin-I; CASA2_BOVIN

### Research Background

Important role in the capacity of milk to transport calcium phosphate.  
Casocidin-I inhibits the growth of E.coli and S.carnosus.

**Inhibitor · Natural Compounds · Compound Libraries · Recombinant Proteins**

This product is for Research Use Only. Not for Human or Veterinary or Therapeutic Use

Tel: 781-999-4286 E\_mail: info@targetmol.com Address: 34 Washington Street, Wellesley Hills, MA 02481