

Anti-Alpha-S1-casein Polyclonal Antibody

Product Details

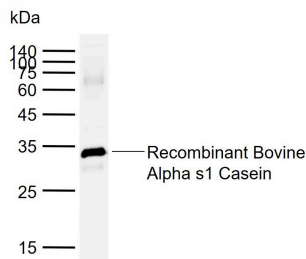
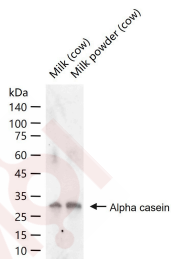
Ig Type: IgG
Reactivity: Cow,Bovine
Molecular Weight: Theoretical: 23 kDa. Actual: 34 kDa.
Purification: Protein A purified

Applications

1. 25 µg total protein per Lane of various lysates probed with Alpha casein polyclonal antibody, unconjugated (TMAB-00105) at 1:1000 dilution and 4°C overnight incubation. Followed by conjugated secondary antibody incubation at RT for 60 min.

2. Sample:

Verified Activity: Lane 1: Recombinant Bovine Alpha s1 Casein
Primary: Anti-Alpha casein (TMAB-00105) at 1/1000 dilution
Secondary: IRDye800CW Goat Anti-Rabbit IgG at 1/20000 dilution
Predicted band size: 23 kDa
Observed band size: 34 kDa



Application: WB
Recommended WB: 1:500-2000

Properties

Stability & Storage: Store at -20°C or -80°C for 12 months. Avoid repeated freeze-thaw cycles.
Shipping: Shipping with blue ice.

Antigen Details

Immunogen:	Casein from bovine milk
Antigen Species:	Bovine
Gene ID:	282208
Uniprot ID:	P02662
Synonyms:	MGC149368;casein, alpha-S1, included;Casoxin-D;CSN1;CASA;casein, alpha;CASA1_Cow;Casein;CSN1S1;Casein alpha s1
Biology Area:	Other Antibodies

Research Background

Casein is the name for a family of related phosphoproteins (α S1, α S2, β , κ). These proteins are commonly found in mammalian milk, making up 80% of the proteins in cow milk and between 20% and 45% of the proteins in human milk. Casein has a wide variety of uses, from being a major component of cheese, to use as a food additive, to a binder for safety matches. As a food source, casein supplies amino acids; carbohydrates; and two inorganic elements, calcium and phosphorus.

Inhibitor · Natural Compounds · Compound Libraries · Recombinant Proteins

This product is for Research Use Only · Not for Human or Veterinary or Therapeutic Use

Tel:781-999-4286 E_mail:info@targetmol.com Address:34 Washington Street,Wellesley Hills,MA 02481