

Anti-Alpha-fetoprotein Antibody (5G216)

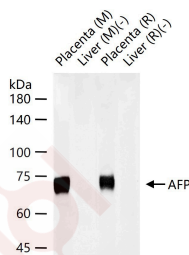
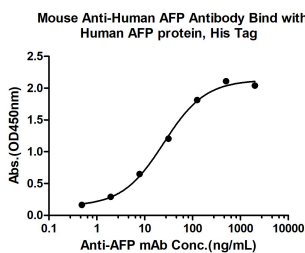
Product Details

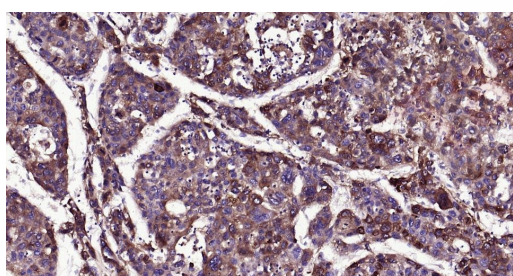
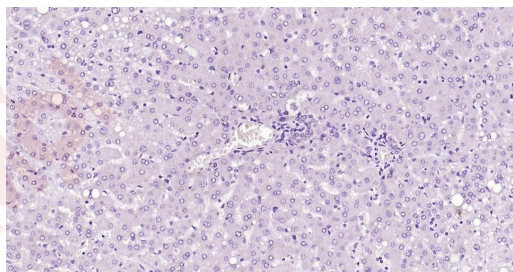
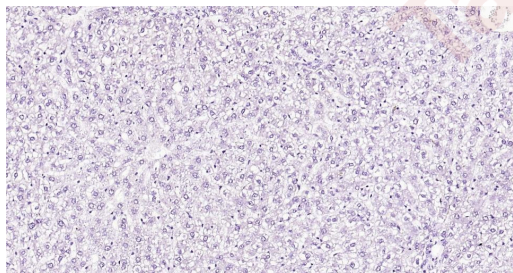
Ig Type:	IgG
Reactivity:	Human,Rat,Mouse
Molecular Weight:	Theoretical: 65 kDa. Actual: 70 kDa.
Clone:	5G216
Purification:	Protein G purified

Applications

Verified Activity:

1. Measured by its binding ability in a indirect ELISA. Immobilized Human AFP protein, His Tag at 2 µg/mL (100 µL/well) can bind Mouse Anti-Human AFP Antibody, the EC50 is 24.94 ng/mL.
2. 25 µg total protein per Lane of various lysates probed with AFp (A2) monoclonal antibody, unconjugated (TMAB-00104) at 1:1000 dilution and 4°C overnight incubation. Followed by conjugated secondary antibody incubation at RT for 60 min.
3. (Negative control) paraformaldehyde-fixed, paraffin embedded Rat Liver; Antigen retrieval by boiling in sodium citrate buffer (pH6.0) for 15 min; Antibody incubation with AFp (A2) Monoclonal Antibody, Unconjugated (TMAB-00104) at 1:500 overnight at 4°C, followed by conjugation to the secondary antibody and DAB staining.
4. (Negative control) paraformaldehyde-fixed, paraffin embedded Human Liver; Antigen retrieval by boiling in sodium citrate buffer (pH6.0) for 15 min; Antibody incubation with AFp (A2) Monoclonal Antibody, Unconjugated (TMAB-00104) at 1:500 overnight at 4°C, followed by conjugation to the secondary antibody and DAB staining.
5. Paraformaldehyde-fixed, paraffin embedded Human Liver Cancer; Antigen retrieval by boiling in sodium citrate buffer (pH6.0) for 15 min; Antibody incubation with AFp (A2) Monoclonal Antibody, Unconjugated (TMAB-00104) at 1:200 overnight at 4°C, followed by conjugation to the secondary antibody and DAB staining.





Application: ELISA,IF,IHC-Fr,IHC-P,WB

Recommended WB: 1:500-2000; IHC-P: 1:100-500; IHC-Fr: 1:100-500; IF: 1:100-500; ELISA: 1:5000-10000

Properties

Stability & Storage: Store at -20°C or -80°C for 12 months. Avoid repeated freeze-thaw cycles.

Shipping: Shipping with blue ice.

Antigen Details

Immunogen: AFP protein

Synonyms: alpha fetoprotein precursor;alpha Fetoprotein;alpha-1-fetoprotein;FETA;alpha-fetoglobulin;HPAFP

Biology Area: Tumor antigens,Serum Proteins,Liver development,Cardiovascular ELISA kits

Research Background

Alpha 1 Fetoprotein is a major plasma protein produced by the yolk sac and the liver during fetal life. Alpha fetoprotein expression in adults is often associated with hepatoma or teratoma. However, hereditary persistence of alpha-fetoprotein may also be found in individuals with no obvious pathology. The protein is thought to be the fetal counterpart of serum albumin, and the alpha fetoprotein and albumin genes are present in tandem in the same transcriptional orientation on chromosome 4. Alpha fetoprotein is found in monomeric as well as dimeric and trimeric forms, and binds copper, nickel, fatty acids and bilirubin. The level of alpha fetoprotein in amniotic fluid is used to measure renal loss of protein to screen for spina bifida and anencephaly. Expression has been documented in human adrenal, liver, ovary, testis, and pancreas. ESTs have been isolated from normal human brain, liver/spleen, embryo and uterus tissue libraries.

Inhibitor · Natural Compounds · Compound Libraries · Recombinant Proteins

This product is for Research Use Only · Not for Human or Veterinary or Therapeutic Use

Tel:781-999-4286 E_mail:info@targetmol.com Address:34 Washington Street,Wellesley Hills,MA 02481