

Anti-ALOX12 Polyclonal Antibody

Product Details

Ig Type: IgG
Reactivity: Human, Mouse (predicted: Rat)
Molecular Weight: Theoretical: 76 kDa. Actual: 76 kDa.
Purification: Protein A purified

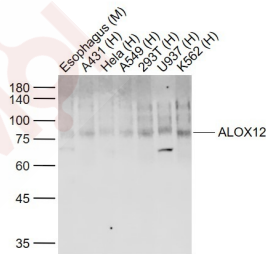
Applications

Sample:

Lane 1: Esophagus (Mouse) Lysate at 40 μ g
Lane 2: A431 (Human) Cell Lysate at 30 μ g
Lane 3: Hela (Human) Cell Lysate at 30 μ g
Lane 4: A549 (Human) Cell Lysate at 30 μ g
Lane 5: 293T (Human) Cell Lysate at 30 μ g
Lane 6: U937 (Human) Cell Lysate at 30 μ g
Lane 7: K562 (Human) Cell Lysate at 30 μ g

Verified Activity:

Primary: Anti-ALOX12 (TMAB-00097) at 1/1000 dilution
Secondary: IRDye800CW Goat Anti-Rabbit IgG at 1/20000 dilution
Predicted band size: 76 kDa
Observed band size: 76 kDa



Application: WB
Recommended: WB: 1:500-2000

Properties

Stability & Storage: Store at -20°C or -80°C for 12 months. Avoid repeated freeze-thaw cycles.
Shipping: Shipping with blue ice.

Antigen Details

Immunogen:	KLH conjugated synthetic peptide: human 12 Lipoxygenase
Antigen Species:	Human
Gene ID:	239
Uniprot ID:	P18054
Synonyms:	12LO;ALOX12;Linoleate (13S)-lipoxygenase;Arachidonate (12S)-lipoxygenase (12S-LOX;12S-lipoxygenase);Lipoxin synthase 12-LO;Arachidonate (15S)-lipoxygenase;LOG12;Platelet-type lipoxygenase 12;Polyunsaturated fatty acid lipoxygenase ALOX12
Biology Area:	Lipid metabolism,Lipases,Cell differentiation,Lipases

Research Background

This gene encodes a member of the lipoxygenase family of proteins. The encoded enzyme acts on different polyunsaturated fatty acid substrates to generate bioactive lipid mediators including eicosanoids and lipoxins. The encoded enzyme and its reaction products have been shown to regulate platelet function. Elevated expression of this gene has been observed in pancreatic islets derived from human diabetes patients. Allelic variants in this gene may be associated with susceptibility to toxoplasmosis. Multiple pseudogenes of this gene have been identified in the human genome. [provided by RefSeq, Aug 2017]

Inhibitor · Natural Compounds · Compound Libraries · Recombinant Proteins

This product is for Research Use Only · Not for Human or Veterinary or Therapeutic Use

Tel:781-999-4286 E_mail:info@targetmol.com Address:34 Washington Street,Wellesley Hills,MA 02481