

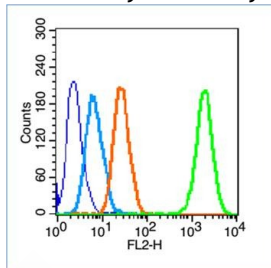
Anti-Alkaline Phosphatase/ALPL Polyclonal Antibody 2

Product Details

Ig Type:	IgG
Reactivity:	Human (predicted:Mouse,Rat,Cow,Rabbit)
Molecular Weight:	Theoretical: 55 kDa.
Purification:	Protein A purified

Applications

Verified Activity:	Blank control (blue line): Hep G2 (fixed with 70% ethanol Overnight at 4°C). Primary Antibody (green line): Rabbit Anti-Bone Alkaline Phosphatase antibody (TMAB-00095), Dilution: 1 µg/10 ⁶ cells. Isotype Control Antibody (orange line): Rabbit IgG. Secondary Antibody (white blue line): Goat anti-rabbit IgG-PE, Dilution: 1 µg/test.
--------------------	--



Application:	FCM
Recommended	FCM: 1ug/Test

Properties

Stability & Storage:	Store at -20°C or -80°C for 12 months. Avoid repeated freeze-thaw cycles.
Shipping:	Shipping with blue ice.

Antigen Details

Immunogen:	KLH conjugated synthetic peptide: human Bone Alkaline Phosphatase
Antigen Species:	Human
Gene ID:	249
Uniprot ID:	P05186
Synonyms:	HPPI;HPPA;TNALP;AP-TNAP;HPPO;HPPC;APTNA;HOPS;TNSALP;TNAP;TNS-ALP

Research Background

Alkaline phosphatase (ALP) removes phosphate groups from the 5' end of DNA and RNA, and from proteins, at high pH. Most mammals have 4 different isozymes: placental, placental like, intestinal and non tissue specific (found in liver, kidney and bone). Tissues with particularly high concentrations of ALP include the liver, bile ducts, placenta, and bone. Damaged or diseased tissue releases enzymes into the blood, so serum ALP measurements can be abnormal in many conditions, including bone disease and liver disease.

Inhibitor · Natural Compounds · Compound Libraries · Recombinant Proteins

This product is for Research Use Only · Not for Human or Veterinary or Therapeutic Use

Tel:781-999-4286 E_mail:info@targetmol.com Address:34 Washington Street,Wellesley Hills,MA 02481