

## Anti-Alkaline Phosphatase/ALPL Antibody (4R389)

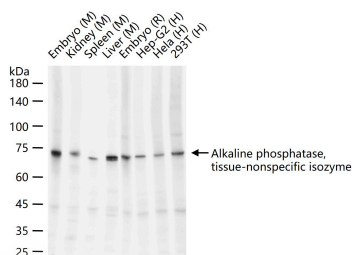
## Product Details

Ig Type:	IgG
Reactivity:	Human,Mouse,Rat
Molecular Weight:	Theoretical: 56 kDa. Actual: 72 kDa.
Clone:	4R389
Purification:	Protein A purified

## Applications

## Verified Activity:

25 µg total protein per Lane of various lysates probed with Alkaline phosphatase, tissue-nonspecific isozyme monoclonal antibody, unconjugated (TMAB-00094) at 1:1000 dilution and 4°C overnight incubation. Followed by conjugated secondary antibody incubation at RT for 60 min.



Application:	WB
Recommended	WB: 1:500-2000

## Properties

Stability & Storage:	Store at -20°C or -80°C for 12 months. Avoid repeated freeze-thaw cycles.
Shipping:	Shipping with blue ice.

## Antigen Details

Immunogen:	KLH conjugated synthetic peptide: human Alkaline phosphatase, tissue-nonspecific isozyme
Antigen Species:	Human
Gene ID:	249
Uniprot ID:	P05186
Synonyms:	HOPS;TNAP;HPPO;HPPC;HPPA;APTNA;AP-TNAP;TNALP;TNS-ALP;TNSALP;HPPI

## Research Background

Alkaline phosphatase (ALP) removes phosphate groups from the 5' end of DNA and RNA, and from proteins, at high pH. Most mammals have 4 different isozymes: placental, placental like, intestinal and non tissue specific (found in liver, kidney and bone). Tissues with particularly high concentrations of ALP include the liver, bile ducts, placenta, and bone. Damaged or diseased tissue releases enzymes into the blood, so serum ALP measurements can be abnormal in many conditions, including bone disease and liver disease.

**Inhibitor · Natural Compounds · Compound Libraries · Recombinant Proteins**

This product is for Research Use Only · Not for Human or Veterinary or Therapeutic Use

Tel:781-999-4286 E\_mail:info@targetmol.com Address:34 Washington Street,Wellesley Hills,MA 02481