

Anti-ADRB2 Polyclonal Antibody

Product Details

Ig Type: IgG
Reactivity: Human,Mouse,Rat
Molecular Weight: Theoretical: 46 kDa. Actual: 50 kDa.
Purification: Protein A purified

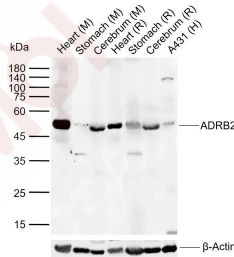
Applications

Sample:

Lane 1: Mouse Heart tissue lysates
Lane 2: Mouse Stomach tissue lysates
Lane 3: Mouse Cerebrum tissue lysates
Lane 4: Rat Heart tissue lysates
Lane 5: Rat Stomach tissue lysates

Verified Activity:

Lane 6: Rat Cerebrum tissue lysates
Lane 7: Human A431 cell lysates
Primary: Anti-TBX1 (TMAB-00070) at 1/1000 dilution
Secondary: IRDye800CW Goat Anti-Rabbit IgG at 1/20000 dilution
Predicted band size: 46 kDa
Observed band size: 50 kDa



Application: WB
Recommended WB: 1:500-2000

Properties

Stability & Storage: Store at -20°C or -80°C for 12 months. Avoid repeated freeze-thaw cycles.
Shipping: Shipping with blue ice.

Antigen Details

Immunogen: KLH conjugated synthetic peptide: human ADRB2
Antigen Species: Human
Gene ID: 154
Uniprot ID: P07550
Synonyms: Beta-2 adrenergic receptor;Beta-2 adrenoreceptor;Beta-2 adrenoceptor;ADRB 2;B2AR;ADRB2R
Biology Area: Ischemia / Reperfusion,Myocardial regeneration,GPCR

Research Background

Beta 2 Adrenergic Receptor is a member of the G protein coupled receptor superfamily. This receptor is directly associated with one of its ultimate effectors, the class C L type calcium channel Ca(V)1.2. This receptor channel complex also contains a G protein, an adenylyl cyclase, cAMP dependent kinase, and the counterbalancing phosphatase, PP2A. The assembly of the signaling complex provides a mechanism that ensures specific and rapid signaling by this G protein coupled receptor. This gene contains no introns in either its coding or untranslated sequences. Different polymorphic forms, point mutations, and/or downregulation of this gene are associated with nocturnal asthma, obesity and type 2 diabetes. Expression of the beta 2 Adrenergic Receptor has been reported in adipose, blood, brain, heart, lung, nose, pancreas, skeletal muscle, skin, and vessel.

Inhibitor · Natural Compounds · Compound Libraries · Recombinant Proteins

This product is for Research Use Only · Not for Human or Veterinary or Therapeutic Use

Tel:781-999-4286 E_mail:info@targetmol.com Address:34 Washington Street,Wellesley Hills,MA 02481