

Anti-Acetyl-Alpha Tubulin (Lys40) Antibody (1U664)

Product Details

Ig Type:	IgG
Reactivity:	Human,Mouse,Rat (predicted:Zebrafish)
Molecular Weight:	Theoretical: 50 kDa. Actual: 50 kDa.
Clone:	1U664
Purification:	Protein G purified

Applications

Sample:

Lane 1: A549 (Human) Cell Lysate at 30 µg

Lane 2: LOVO (Human) Cell Lysate at 30 µg

Lane 3: A431 (Human) Cell Lysate at 30 µg

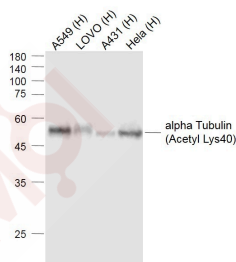
Verified Activity: Lane 4: HeLa (Human) Cell Lysate at 30 µg

Primary: Anti-alpha Tubulin (Acetyl Lys40) (TMAB-00033) at 1/1000 dilution

Secondary: IRDye800CW Goat Anti-Mouse IgG at 1/20000 dilution

Predicted band size: 52 kDa

Observed band size: 52 kDa



Application: WB

Recommended WB: 1:500-2000

Properties

Stability & Storage: Store at -20°C or -80°C for 12 months. Avoid repeated freeze-thaw cycles.

Shipping: Shipping with blue ice.

Antigen Details

Immunogen:	KLH conjugated synthesised acetylpeptide: human alpha Tubulin around the acetylation site of Acetyl Lys40
Antigen Species:	Human
Synonyms:	Alpha-Tubulin K40 ac;TUBA 4A;alpha tubulin 1;TBA1B;Tubulin alpha 4a;H2 alpha;TBA1A;Detyrosinated alpha Tubulin;Tubulin alpha 1(testis specific);Alpha-Tubulin K40-acetylated;TUBA1;TBA4A;Tubulin alpha 1;Tuba4a;FLJ30169;Ac-Alpha Tubulin (Lys40);Acetyl-Alpha Tubulin (K40);Alpha-TubulinK40ac; α tubulin;Ac-Alpha Tubulin (K40);Tubulin alpha 1 chain;Tubulin alpha 4A chain;Tubulin H2 alpha;Tubulin alpha-1 chain;Testis specific alpha tubulin
Biology Area:	Tubulin

Research Background

Tubulin is a major cytoskeleton that has five distinct forms, designated alpha, beta, gamma, delta and epsilon tubulin. The alpha and beta tubulins form a heterodimer that polymerize into the cylindrical microtubule fibers. Both alpha and beta tubulin bind GTP. Only beta tubulin hydrolyzes GTP to GDP. This hydrolysis is a process that is linked to tubulin polymerization and microtubule formation. The alpha tubulin isomer can be modified by addition of a C-terminal tyrosine residue. This modification may influence polymerization rates. The gamma tubulin isomer is localized to centrosomes which compose the heart of the microtubule organizing center from which microtubule fibers emanate.

Inhibitor · Natural Compounds · Compound Libraries · Recombinant Proteins

This product is for Research Use Only · Not for Human or Veterinary or Therapeutic Use

Tel:781-999-4286 E_mail:info@targetmol.com Address:34 Washington Street,Wellesley Hills,MA 02481