

Anti-ACE Polyclonal Antibody

Product Details

Ig Type: IgG
 Reactivity: Mouse,Rat (predicted:Human,Dog,Pig,Cow)
 Molecular Weight: Theoretical: 147 kDa. Actual: 110180 kDa.
 Purification: Protein A purified

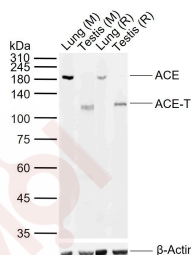
Applications

Sample:

Lane 1: Mouse Lung tissue lysates
 Lane 2: Mouse Testis tissue lysates
 Lane 3: Rat Lung tissue lysates

Verified Activity:

Lane 4: Rat Testis tissue lysates
 Primary: Anti-ACE (TMAB-00031) at 1/1000 dilution
 Secondary: IRDye800CW Goat Anti-Rabbit IgG at 1/20000 dilution
 Predicted band size: 147 kDa
 Observed band size: 110,180 kDa



Application: ELISA,WB
 Recommended WB: 1:500-2000; ELISA: 1:5000-10000

Properties

Stability & Storage: Store at -20°C or -80°C for 12 months. Avoid repeated freeze-thaw cycles.
 Shipping: Shipping with blue ice.

Antigen Details

Immunogen: KLH conjugated synthetic peptide: human ACE1
 Antigen Species: Human
 Gene ID: 1636
 Uniprot ID: P12821
 Synonyms: Dipeptidyl carboxypeptidase I;CD antigen CD143;Kininase II;Angiotensin-converting enzyme; DCP DCP1;EC 3.4.15.1
 Biology Area: Response to hypoxia,Serum Proteins,Vasoconstriction,ACEs,Cardiovascular ELISA kits,Vitamins / minerals,Hypoxia,Vitamins / Minerals,Surface Molecules

Research Background

Angiotensin Converting enzyme is involved in catalyzing the conversion of angiotensin I into a physiologically active peptide angiotensin II. Angiotensin II is a potent vasopressor and aldosterone-stimulating peptide that controls blood pressure and fluid-electrolyte balance. This enzyme plays a key role in the renin-angiotensin system. ACE converts angiotensin I to angiotensin II by release of the terminal His-Leu, this results in an increase of the vasoconstrictor activity of angiotensin. Also able to inactivate bradykinin, a potent vasodilator. ACE exists in two forms, a 170KD somatic form and a 90KD germinal form. The somatic form is expressed by endothelial cells (especially those of lung capillaries and arterioles), epithelial cells (especially in proximal renal tubules and small intestine), by some neuronal cells and variably by some macrophages and T lymphocytes. The germinal form is expressed by spermatozoa.

Inhibitor · Natural Compounds · Compound Libraries · Recombinant Proteins

This product is for Research Use Only · Not for Human or Veterinary or Therapeutic Use

Tel:781-999-4286 E_mail:info@targetmol.com Address:34 Washington Street,Wellesley Hills,MA 02481