

Anti-ABCG1 Polyclonal Antibody

Product Details

Ig Type: IgG
Reactivity: Human, Mouse, Rat (predicted: Dog)
Molecular Weight: Theoretical: 76 kDa. Actual: 76 kDa.
Purification: Protein A purified

Applications

1. Paraformaldehyde-fixed, paraffin embedded (Mouse brain); Antigen retrieval by boiling in sodium citrate buffer (pH6.0) for 15 min; Block endogenous peroxidase by 3% hydrogen peroxide for 20 min; Blocking buffer (normal goat serum) at 37°C for 30 min; Antibody incubation with ABCG1 Polyclonal Antibody, Unconjugated (TMAB-00023) at 1:400 overnight at 4°C, followed by operating according to SP Kit (Rabbit) instructions and DAB staining.

2. Sample:

Cerebrum (Mouse) Lysate at 40 µg

Primary: Anti-ABCG1 (TMAB-00023) at 1/1000 dilution

Secondary: IRDye800CW Goat Anti-Rabbit IgG at 1/20000 dilution

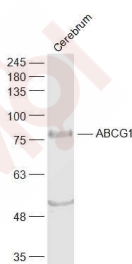
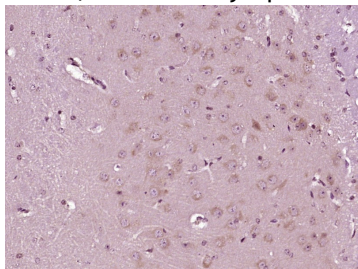
Predicted band size: 76 kDa

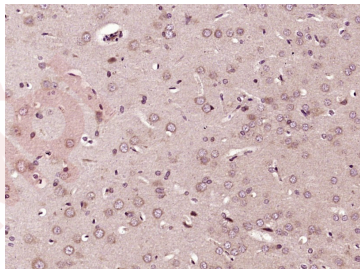
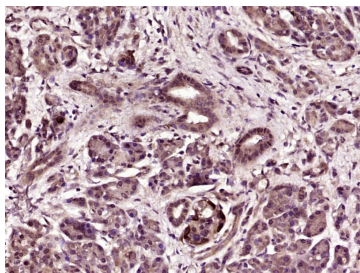
Observed band size: 76 kDa

Verified Activity:

3. Paraformaldehyde-fixed, paraffin embedded (Human pancreatic cancer); Antigen retrieval by boiling in sodium citrate buffer (pH6.0) for 15 min; Block endogenous peroxidase by 3% hydrogen peroxide for 20 min; Blocking buffer (normal goat serum) at 37°C for 30 min; Antibody incubation with (ABCG1) Polyclonal Antibody, Unconjugated (TMAB-00023) at 1:400 overnight at 4°C, followed by operating according to SP Kit (Rabbit) instructions and DAB staining.

4. Paraformaldehyde-fixed, paraffin embedded (Rat brain); Antigen retrieval by boiling in sodium citrate buffer (pH6.0) for 15 min; Block endogenous peroxidase by 3% hydrogen peroxide for 20 min; Blocking buffer (normal goat serum) at 37°C for 30 min; Antibody incubation with (ABCG1) Polyclonal Antibody, Unconjugated (TMAB-00023) at 1:400 overnight at 4°C, followed by operating according to SP Kit (Rabbit) instructions and DAB staining.





Application: IF,IHC-Fr,IHC-P,WB

Recommended WB: 1:500-2000; IHC-P: 1:100-500; IHC-Fr: 1:100-500; IF: 1:100-500

Properties

Stability & Storage: Store at -20°C or -80°C for 12 months. Avoid repeated freeze-thaw cycles.

Shipping: Shipping with blue ice.

Antigen Details

Immunogen: KLH conjugated synthetic peptide: human ABCG1

Antigen Species: Human

Gene ID: 9619

Uniprot ID: P45844

Synonyms: ATP-binding cassette sub-family G member 1;ABC transporter 8;MGC34313;ATP-binding cassette transporter member 1 of subfamily G;WHT1;ABCG1;ATP-binding cassette, sub family G WHITE member 1;Abc8;WHITE1;ATP-binding cassette transporter 8;homolog of Drosophila white;White protein homolog ATP binding cassette transporter 8;White protein homolog
Biology Area: Metabolism,Lipoproteins/Apolipoproteins,Cholesterol Metabolism,Lipid metabolism, Lipoprotein metabolism,Cancer,Heart disease,Astrocyte marker,Lipid metabolism

Research Background

The protein encoded by this gene is a member of the superfamily of ATP-binding cassette (ABC) transporters. ABC proteins transport various molecules across extra- and intra-cellular membranes. ABC genes are divided into seven distinct subfamilies (ABC1, MDR/TAP, MRP, ALD, OABP, GCN20, White). This protein is a member of the White subfamily. It is involved in macrophage cholesterol and phospholipids transport, and may regulate cellular lipid homeostasis in other cell types. Six alternative splice variants have been identified.

Inhibitor · Natural Compounds · Compound Libraries · Recombinant Proteins

This product is for Research Use Only · Not for Human or Veterinary or Therapeutic Use

Tel:781-999-4286 E_mail:info@targetmol.com Address:34 Washington Street,Wellesley Hills,MA 02481