

Anti-5-BrdU Antibody (4C731)

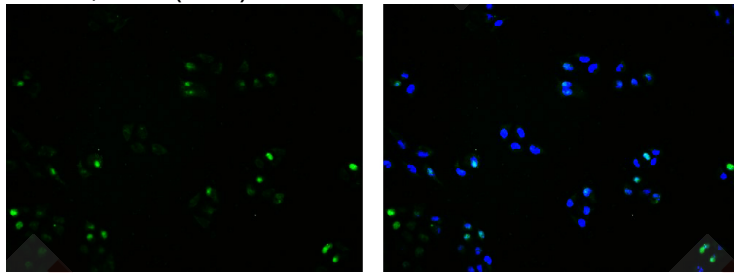
Product Details

Ig Type:	IgG
Reactivity:	Species independent
Molecular Weight:	Theoretical: 0.3071 kDa.
Clone:	4C731
Purification:	Protein G purified

Applications

Verified Activity:

4% Paraformaldehyde-fixed HeLa (treated with 10uM BrdU for 24 hours) (H) cells; 2M HCL at RT for 20 min; Antibody incubation with (BrdU) monoclonal Antibody, unconjugated (TMAB-00006) 1:100, 90 min at 37°C; followed by conjugated Goat Anti-Mouse IgG antibody (green) at 37°C for 90 min, DAPI (blue) was used to stain the cell nucleus.



Application:	ICC/IF
Recommended	ICC/IF=1:100-500

Properties

Stability & Storage:	Store at -20°C or -80°C for 12 months. Avoid repeated freeze-thaw cycles.
Shipping:	Shipping with blue ice.

Antigen Details

Immunogen:	KLH conjugated Brdu
Synonyms:	5-Bromo-2'-deoxyuridine;5-Bromo-2-deoxyUridine;Bromodeoxyuridine;BrdU (Proliferation Marker)
Biology Area:	Markers,DNA / Nucleotides,Soma marker,Replication

Research Background

The immunocytochemical detection of bromodeoxyuridine (BrdU) incorporated into DNA is a powerful tool to study the cytokinetics of normal and neoplastic cells. In vitro or in vivo labeling of tumor cells with the thymidine analogue BrdU and the subsequent detection of incorporated BrdU with specific anti-BrdU monoclonal antibodies is an accurate and comprehensive method to quantitate the degree of DNA-synthesis.

BrdU is incorporated into the newly synthesized DNA of S-phase cells may provide an estimate for the fraction of cells in S-phase. Also dynamic proliferative information such as the S-phase transit rate and the potential doubling time can be obtained, by means of bivariate BrdU/DNA flow cytometric analysis

Inhibitor · Natural Compounds · Compound Libraries · Recombinant Proteins

This product is for Research Use Only · Not for Human or Veterinary or Therapeutic Use

Tel:781-999-4286 E_mail:info@targetmol.com Address:34 Washington Street,Wellesley Hills,MA 02481