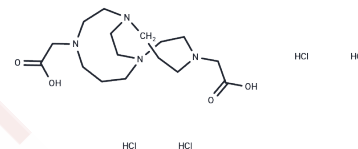


## CB-TE2A tetrahydrochloride

### Chemical Properties

CAS No. : 1260798-95-5  
 Formula: C<sub>16</sub>H<sub>34</sub>Cl<sub>4</sub>N<sub>4</sub>O<sub>4</sub>  
 Molecular Weight: 488.28  
 Storage: Powder: -20°C for 3 years | In solvent: -80°C for 1 year  
 Actual storage temperature shall be subject to the COA.



### Biological Description

Description	CB-TE2A (tetrahydrochloride) is a bifunctional chelator (Bifunctional Chelator; BFC) and a derivative of the macrocyclic ligand TETA, featuring a fourteen-membered chain. It is utilized for the conjugation of peptides and radionuclides.
Targets(IC50)	Others

### Preparing Stock Solutions

	1mg	5mg	10mg
1 mM	2.048 mL	10.240 mL	20.4801 mL
5 mM	0.4096 mL	2.048 mL	4.096 mL
10 mM	0.2048 mL	1.024 mL	2.048 mL
50 mM	0.041 mL	0.2048 mL	0.4096 mL

Please select the appropriate solvent to prepare the stock solution, according to the solubility of the product in different solvents. Please use it as soon as possible.

Note: The dilution table applies only to solid products. For liquid products, please calculate the stock solution based on the stated concentration and/or density.

**Inhibitor · Natural Compounds · Compound Libraries · Recombinant Proteins**

This product is for Research Use Only· Not for Human or Veterinary or Therapeutic Use

Tel:781-999-4286 E\_mail:info@targetmol.com Address:34 Washington Street,Wellesley Hills,MA 02481