

## Cholesterol laurate

## Chemical Properties

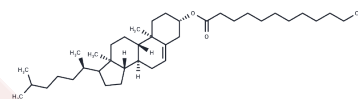
CAS No. :

Formula: C<sub>39</sub>H<sub>68</sub>O<sub>2</sub>

Molecular Weight: 568.96

Storage: Powder: -20°C for 3 years | In solvent: -80°C for 1 year

Actual storage temperature shall be subject to the COA.



## Biological Description

Description	Cholesterollaurate is a type of cholesterol ester known for its excellent biocompatibility, bioavailability, and bioactivity (Cholesterollaurate). It is utilized in the research of drug delivery systems.
Targets(IC50)	Others

## Preparing Stock Solutions

	1mg	5mg	10mg
1 mM	1.7576 mL	8.788 mL	17.5759 mL
5 mM	0.3515 mL	1.7576 mL	3.5152 mL
10 mM	0.1758 mL	0.8788 mL	1.7576 mL
50 mM	0.0352 mL	0.1758 mL	0.3515 mL

Please select the appropriate solvent to prepare the stock solution, according to the solubility of the product in different solvents. Please use it as soon as possible.

Note: The dilution table applies only to solid products. For liquid products, please calculate the stock solution based on the stated concentration and/or density.

Inhibitor · Natural Compounds · Compound Libraries · Recombinant Proteins

This product is for Research Use Only · Not for Human or Veterinary or Therapeutic Use

Tel:781-999-4286

E\_mail:info@targetmol.com

Address:34 Washington Street,Wellesley Hills,MA 02481