

Naphthalen-1-yl phosphate sodium hydrate

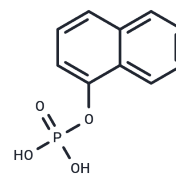
Chemical Properties

CAS No. :	207569-06-0
Formula:	C ₁₀ H ₉ O ₄ P.xH ₂ O.2Na
Molecular Weight:	290.162
Storage:	Powder: -20°C for 3 years In solvent: -80°C for 1 year Actual storage temperature shall be subject to the COA.

H₂O

NaH

NaH



Biological Description

Description	Naphthalen-1-yl phosphate sodium hydrate is a biochemical reagent that can be used as a biomaterial for life science related research and as a sulfonylation reagent for organic synthesis and drug discovery.
-------------	--

Preparing Stock Solutions

	1mg	5mg	10mg
1 mM	3.4464 mL	17.2319 mL	34.4637 mL
5 mM	0.6893 mL	3.4464 mL	6.8927 mL
10 mM	0.3446 mL	1.7232 mL	3.4464 mL
50 mM	0.0689 mL	0.3446 mL	0.6893 mL

Please select the appropriate solvent to prepare the stock solution, according to the solubility of the product in different solvents. Please use it as soon as possible.

Note: The dilution table applies only to solid products. For liquid products, please calculate the stock solution based on the stated concentration and/or density.

Inhibitor · Natural Compounds · Compound Libraries · Recombinant Proteins

This product is for Research Use Only · Not for Human or Veterinary or Therapeutic Use

Tel: 781-999-4286 E_mail: info@targetmol.com Address: 34 Washington Street, Wellesley Hills, MA 02481