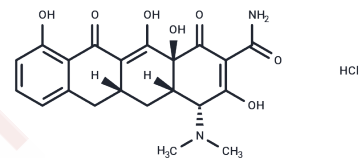


## epi-Sancycline hydrochloride

## Chemical Properties

CAS No. :	906364-48-5
Formula:	C <sub>21</sub> H <sub>23</sub> ClN <sub>2</sub> O <sub>7</sub>
Molecular Weight:	450.87
Storage:	Powder: -20°C for 3 years   In solvent: -80°C for 1 year Actual storage temperature shall be subject to the COA.



## Biological Description

Description	epi-Sancycline (hydrochloride) is a type of biochemical reagent utilized in glycobiology research. Glycobiology involves the study of the structure, synthesis, biology, and evolution of carbohydrates. It encompasses carbohydrate chemistry, the enzymology of glycan formation and degradation, protein-glycan recognition, and the role of glycans in biological systems. This field is closely linked with fundamental research, biomedicine, and biotechnology.
Targets(IC50)	Others

## Preparing Stock Solutions

	1mg	5mg	10mg
1 mM	2.2179 mL	11.0897 mL	22.1793 mL
5 mM	0.4436 mL	2.2179 mL	4.4359 mL
10 mM	0.2218 mL	1.109 mL	2.2179 mL
50 mM	0.0444 mL	0.2218 mL	0.4436 mL

Please select the appropriate solvent to prepare the stock solution, according to the solubility of the product in different solvents. Please use it as soon as possible.

Note: The dilution table applies only to solid products. For liquid products, please calculate the stock solution based on the stated concentration and/or density.

Inhibitor · Natural Compounds · Compound Libraries · Recombinant Proteins

This product is for Research Use Only · Not for Human or Veterinary or Therapeutic Use

Tel:781-999-4286 E\_mail:info@targetmol.com Address:34 Washington Street,Wellesley Hills,MA 02481