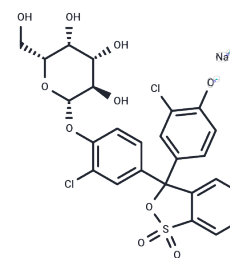


## Chlorophenol red $\beta$ -D-galactopyranoside sodium

### Chemical Properties

CAS No. :	99792-50-4
Formula:	C <sub>25</sub> H <sub>21</sub> Cl <sub>2</sub> NaO <sub>10</sub> S
Molecular Weight:	607.39
Storage:	Powder: -20°C for 3 years   In solvent: -80°C for 1 year Actual storage temperature shall be subject to the COA.



### Biological Description

Description	Chlorophenol red $\beta$ -D-galactopyranoside sodium (CPRG) is a yellow chromogenic substrate for $\beta$ -D-Galactosidase .
Targets(IC50)	Others

### Preparing Stock Solutions

	1mg	5mg	10mg
1 mM	1.6464 mL	8.2319 mL	16.4639 mL
5 mM	0.3293 mL	1.6464 mL	3.2928 mL
10 mM	0.1646 mL	0.8232 mL	1.6464 mL
50 mM	0.0329 mL	0.1646 mL	0.3293 mL

Please select the appropriate solvent to prepare the stock solution, according to the solubility of the product in different solvents. Please use it as soon as possible.

Note: The dilution table applies only to solid products. For liquid products, please calculate the stock solution based on the stated concentration and/or density.

**Inhibitor · Natural Compounds · Compound Libraries · Recombinant Proteins**

This product is for Research Use Only· Not for Human or Veterinary or Therapeutic Use

Tel:781-999-4286 E\_mail:info@targetmol.com Address:34 Washington Street,Wellesley Hills,MA 02481