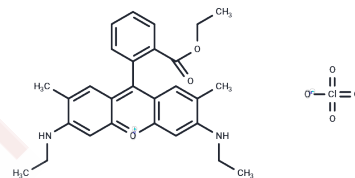


Rhodamine 6G perchlorate

Chemical Properties

CAS No. :	13161-28-9
Formula:	C ₂₈ H ₃₁ ClN ₂ O ₇
Molecular Weight:	543.01
Storage:	Powder: -20°C for 3 years In solvent: -80°C for 1 year Actual storage temperature shall be subject to the COA.



Biological Description

Description	Rhodamine 6G perchlorate is a biochemical reagent that can be used as a biomaterial for life science related research and as a sulfonylation reagent for organic synthesis and drug discovery.
-------------	--

Preparing Stock Solutions

	1mg	5mg	10mg
1 mM	1.8416 mL	9.2079 mL	18.4159 mL
5 mM	0.3683 mL	1.8416 mL	3.6832 mL
10 mM	0.1842 mL	0.9208 mL	1.8416 mL
50 mM	0.0368 mL	0.1842 mL	0.3683 mL

Please select the appropriate solvent to prepare the stock solution, according to the solubility of the product in different solvents. Please use it as soon as possible.

Note: The dilution table applies only to solid products. For liquid products, please calculate the stock solution based on the stated concentration and/or density.

Inhibitor · Natural Compounds · Compound Libraries · Recombinant Proteins

This product is for Research Use Only · Not for Human or Veterinary or Therapeutic Use

Tel:781-999-4286 E_mail:info@targetmol.com Address:34 Washington Street,Wellesley Hills,MA 02481