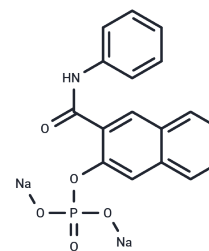


## Naphthol AS phosphate disodium salt

### Chemical Properties

CAS No. : 69815-54-9  
 Formula: C<sub>17</sub>H<sub>12</sub>NNa<sub>2</sub>O<sub>5</sub>P  
 Molecular Weight: 387.23  
 Storage: Powder: -20°C for 3 years | In solvent: -80°C for 1 year  
*Actual storage temperature shall be subject to the COA.*



### Biological Description

Description	Naphthol AS phosphate disodium salt is a reagent used in biochemical reactions.
Targets(IC50)	Others

### Preparing Stock Solutions

	1mg	5mg	10mg
1 mM	2.5824 mL	12.9122 mL	25.8244 mL
5 mM	0.5165 mL	2.5824 mL	5.1649 mL
10 mM	0.2582 mL	1.2912 mL	2.5824 mL
50 mM	0.0516 mL	0.2582 mL	0.5165 mL

Please select the appropriate solvent to prepare the stock solution, according to the solubility of the product in different solvents. Please use it as soon as possible.

Note: The dilution table applies only to solid products. For liquid products, please calculate the stock solution based on the stated concentration and/or density.

**Inhibitor · Natural Compounds · Compound Libraries · Recombinant Proteins**

This product is for Research Use Only · Not for Human or Veterinary or Therapeutic Use

Tel:781-999-4286 E\_mail:info@targetmol.com Address:34 Washington Street,Wellesley Hills,MA 02481