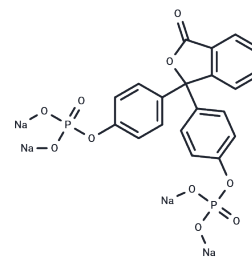


Phenolphthalein bisphosphate sodium

Chemical Properties

CAS No. :	68807-90-9
Formula:	C ₂₀ H ₁₂ Na ₄ O ₁₀ P ₂
Molecular Weight:	566.21
Storage:	Powder: -20°C for 3 years In solvent: -80°C for 1 year Actual storage temperature shall be subject to the COA.



Biological Description

Description	Phenolphthalein bisphosphate (sodium) is utilized as a biomaterial or organic compound in life sciences research.
Targets(IC50)	Others

Preparing Stock Solutions

	1mg	5mg	10mg
1 mM	1.7661 mL	8.8306 mL	17.6613 mL
5 mM	0.3532 mL	1.7661 mL	3.5323 mL
10 mM	0.1766 mL	0.8831 mL	1.7661 mL
50 mM	0.0353 mL	0.1766 mL	0.3532 mL

Please select the appropriate solvent to prepare the stock solution, according to the solubility of the product in different solvents. Please use it as soon as possible.

Note: The dilution table applies only to solid products. For liquid products, please calculate the stock solution based on the stated concentration and/or density.

Inhibitor · Natural Compounds · Compound Libraries · Recombinant Proteins

This product is for Research Use Only · Not for Human or Veterinary or Therapeutic Use

Tel: 781-999-4286 E_mail: info@targetmol.com Address: 34 Washington Street, Wellesley Hills, MA 02481