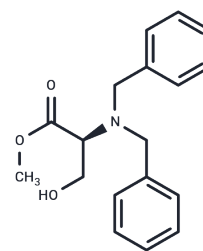


## N,N-Bis(phenylmethyl)-L-serine methyl ester

## Chemical Properties

CAS No. :	88099-67-6
Formula:	C <sub>18</sub> H <sub>21</sub> NO <sub>3</sub>
Molecular Weight:	299.36
Storage:	Powder: -20°C for 3 years   In solvent: -80°C for 1 year Actual storage temperature shall be subject to the COA.



## Biological Description

Description	N,N-Bis(phenylmethyl)-L-serine methyl ester is a biochemical analytical reagent employed in peptide chemistry.
Targets(IC50)	Others

## Preparing Stock Solutions

	1mg	5mg	10mg
1 mM	3.3405 mL	16.7023 mL	33.4046 mL
5 mM	0.6681 mL	3.3405 mL	6.6809 mL
10 mM	0.334 mL	1.6702 mL	3.3405 mL
50 mM	0.0668 mL	0.334 mL	0.6681 mL

Please select the appropriate solvent to prepare the stock solution, according to the solubility of the product in different solvents. Please use it as soon as possible.

Note: The dilution table applies only to solid products. For liquid products, please calculate the stock solution based on the stated concentration and/or density.

**Inhibitor · Natural Compounds · Compound Libraries · Recombinant Proteins**

This product is for Research Use Only · Not for Human or Veterinary or Therapeutic Use

Tel: 781-999-4286 E\_mail: info@targetmol.com Address: 34 Washington Street, Wellesley Hills, MA 02481