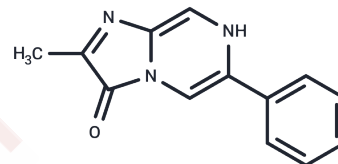


CLA

## Chemical Properties

CAS No. : 19953-58-3  
 Formula: C<sub>13</sub>H<sub>11</sub>N<sub>3</sub>O  
 Molecular Weight: 225.25  
 Storage: Powder: -20°C for 3 years | In solvent: -80°C for 1 year  
 Actual storage temperature shall be subject to the COA.



## Biological Description

Description	CLA, or conjugated linoleic acid, is a polyunsaturated fatty acid that naturally occurs in various animal products such as meat and dairy. It offers several potential health benefits for humans, including the reduction of body fat, improved insulin sensitivity, and anti-inflammatory effects. Extensively researched for its impact on weight loss and muscle growth, CLA also shows potential in preventing chronic diseases like heart disease and cancer. Additionally, it is available as a dietary supplement in capsule form.
-------------	--

## Preparing Stock Solutions

	1mg	5mg	10mg
1 mM	4.4395 mL	22.1976 mL	44.3951 mL
5 mM	0.8879 mL	4.4395 mL	8.879 mL
10 mM	0.444 mL	2.2198 mL	4.4395 mL
50 mM	0.0888 mL	0.444 mL	0.8879 mL

Please select the appropriate solvent to prepare the stock solution, according to the solubility of the product in different solvents. Please use it as soon as possible.

Note: The dilution table applies only to solid products. For liquid products, please calculate the stock solution based on the stated concentration and/or density.

Inhibitor · Natural Compounds · Compound Libraries · Recombinant Proteins

This product is for Research Use Only · Not for Human or Veterinary or Therapeutic Use

Tel:781-999-4286 E\_mail:info@targetmol.com Address:34 Washington Street,Wellesley Hills,MA 02481