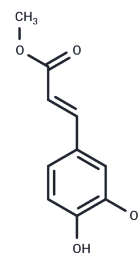


(E)-Methyl caffeate

Chemical Properties

CAS No. :	67667-67-8
Formula:	C ₁₀ H ₁₀ O ₄
Molecular Weight:	194.18
Storage:	Store under nitrogen Powder: -20°C for 3 years In solvent: -80°C for 1 year <small>Actual storage temperature shall be subject to the COA.</small>



Biological Description

Description	(E)-Methyl caffeate is a biochemical reagent that can be used as a biomaterial for life science related research and as a sulfonylation reagent for organic synthesis and drug discovery.
-------------	---

Preparing Stock Solutions

	1mg	5mg	10mg
1 mM	5.1499 mL	25.7493 mL	51.4986 mL
5 mM	1.030 mL	5.1499 mL	10.2997 mL
10 mM	0.515 mL	2.5749 mL	5.1499 mL
50 mM	0.103 mL	0.515 mL	1.030 mL

Please select the appropriate solvent to prepare the stock solution, according to the solubility of the product in different solvents. Please use it as soon as possible.

Note: The dilution table applies only to solid products. For liquid products, please calculate the stock solution based on the stated concentration and/or density.

Inhibitor · Natural Compounds · Compound Libraries · Recombinant Proteins

This product is for Research Use Only · Not for Human or Veterinary or Therapeutic Use

Tel: 781-999-4286 E_mail: info@targetmol.com Address: 34 Washington Street, Wellesley Hills, MA 02481